



SafeRig

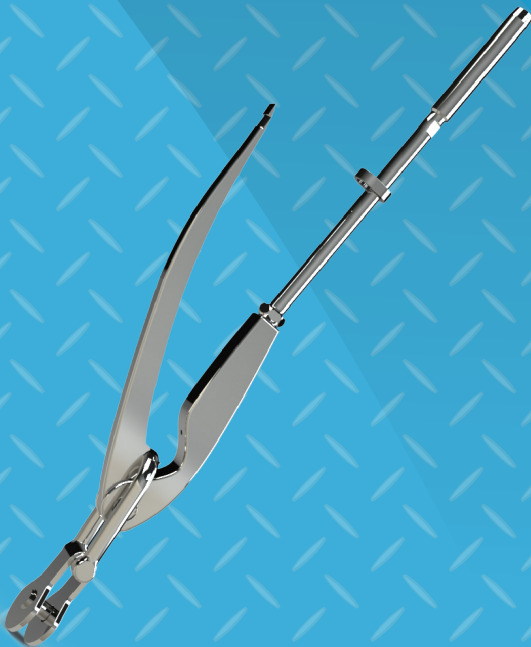
PRODUCT CATALOGUE 2026

PO Box 7275, Warringah Mall NSW 2100 | 19 West Street, Brookvale NSW 2100
Ph: 0419 926 211 | sales@saferig.com.au

saferig.com.au

**NEW
PRODUCT**

Hook Lever



The device secures and regulates a storm jib sail so the vessel is not out of balance when the mainsail has been reduced in storm conditions. It can be a life-saver and in fact an inner fore-stay with or without tensioner is compulsory for New Zealand yachts going blue-water (offshore or deep sea) sailing.

The standard inner fore-stay tensioner until now has been the Highfield Lever, designed over 80 years ago with little modification.

The Swageturn HookLever has fewer component parts, making it simpler, safer and more reliable. There is less chance of losing any parts overboard because there was nothing to assemble or dis-assemble or connect on deck.

Allows up to 50mm thread adjustment.

The product is effectively a hook that is also a lever, with tension pre-set. Once hooked and locked with a recessed ring it would do everything it was required to do.

SKU	Name	Wire Size		Body mm	Thread Length mm	Wire Depth	
		mm	Inch			mm	Inch
HKL08	Hook Lever	6.0	1/4	180.0	95.0	75.0	3
HKL09	Hook Lever	7.0	9/32	180.0	95.0	82.0	3 1/4
HKL10	Hook Lever	8.0	5/16	180.0	95.0	89.0	3 1/2

Contents

Turnbuckle and fittings 04

Swage Fittings 20

Backstay Insulators 25

Mast Fittings 27

Lifeline Fittings 31

Architectural Fittings 36

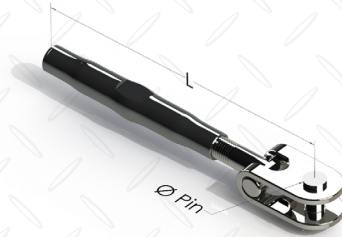
List of Products 42

Full list of products and page numbers

Turnbuckle / Fittings / Assemblies

Closed Turnbuckle Toggle-None

Finish: Chrome-C or Bronze-B



SKU	Name	Body Thread	ØPin		L Closed		L Open		Break Load	
		UNF	mm	Inch	mm	Inch	mm	Inch	Kg	lbs
CB000808	Closed Turnbuckle Toggle-None 1/4", 6.35mm Pin	1/4	6.35	1/4	90.0	3 17/32	130.0	5 1/8	1500	3300
CB001010	Closed Turnbuckle Toggle-None 5/16", 8mm Pin	5/16	8.0	5/16	112.0	4 13/32	151.0	5 30/32	2300	5060
CB001210	Closed Turnbuckle Toggle-None 3/8", 8mm Pin	3/8	8.0	5/16	120.0	4 23/32	165.0	6 1/2	N/A	N/A
CB001212	Closed Turnbuckle Toggle-None 3/8", 9.5mm Pin	3/8	9.5	3/8	120.0	4 23/32	165.0	6 1/2	4000	8800
CB001414	Closed Turnbuckle Toggle-None 7/16", 11mm Pin	7/16	11.0	7/16	149.0	5 7/8	197.0	7 3/4	5200	11440
CB001616	Closed Turnbuckle Toggle-None 1/2", 12.7mm Pin	1/2	12.7	1/2	149.0	5 7/8	197.0	7 3/4	6800	14960
CB001620	Closed Turnbuckle Toggle-None 1/2", 16mm Pin	1/2	16.0	5/8	149.0	5 7/8	197.0	7 3/4	6800	14950
CB002020	Closed Turnbuckle Toggle-None 5/8", 16mm Pin	5/8	16.0	5/8	185.0	7 9/32	243.0	9 9/16	9900	21780
CB002424	Closed Turnbuckle Toggle-None 3/4", 19.2mm Pin	3/4	19.2	3/4	229.0	9 1/64	304.0	11 31/32	13600	29920
CB002828	Closed Turnbuckle Toggle-None 7/8", 22.2mm Pin	7/8	22.2	7/8	282.0	11 3/32	377.0	14 27/32	20400	44880
CB003232	Closed Turnbuckle Toggle-None 1", 25.4mm Pin	1.0	25.4	1	324.0	12 3/4	430.0	16 30/32	27250	59950
CB004040	Closed Turnbuckle Toggle-None 1-1/4", 31.7mm Pin	1 1/4	31.7	1 1/4	370.0	14 9/16	490.0	19 9/32	36200	79640

Closed Turnbuckle, Eye-Eye

Finish: Chrome-C or Bronze-B

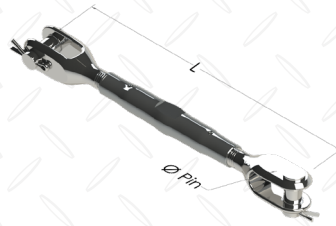


SKU	Name	Body Thread	ØPin		L Closed		L Open		Break Load	
		UNF	MM	Inch	MM	Inch	MM	Inch	Kg	lbs
CBEE08	Closed Turnbuckle, Eye-Eye, 1/4" Body, 6.35mm Pin	1/4	6.35	1/4	157.0	6 3/16	228.0	8 31/32	1500	3300
CBEE10	Closed Turnbuckle, Eye-Eye, 5/16" Body, 8mm Pin	5/16	8.0	5/16	172.0	6 49/64	247.0	9 23/32	2300	5060
CBEE12	Closed Turnbuckle, Eye-Eye, 3/8" Body, 9.5mm Pin	3/8	9.5	3/8	195.0	7 43/64	285.0	11 7/32	4000	8800
CBEE14	Closed Turnbuckle, Eye-Eye, 7/16" Body, 11mm Pin	7/16	11.0	7/16	220.0	8 21/32	317.0	12 15/32	5200	11440
CBEE16	Closed Turnbuckle, Eye-Eye, 1/2" Body, 12.7mm Pin	1/2	12.7	1/2	240.0	9 29/64	331.0	13 1/32	6800	14960
CBEE20	Closed Turnbuckle, Eye-Eye, 5/8" Body, 16mm Pin	5/8	16.0	5/8	290.0	11 27/64	406.0	15 31/32	9900	21780
CBEE24	Closed Turnbuckle, Eye-Eye, 3/4" Body, 19.2mm Pin	3/4	19.2	3/4	370.0	14 9/16	521	20 1/2	13600	29920
CBEE28	Closed Turnbuckle, Eye-Eye, 7/8" Body, 22.2mm Pin	7/8	22.2	7/8	420.0	16 17/32	587	23 1/8	20400	44880
CBEE32	Closed Turnbuckle, Eye-Eye, 1" Body, 25.4mm Pin	1.0	25.4	1	482.0	18 31/32	672	26 15/32	27250	59950
CBEE40	Closed Turnbuckle, Eye-Eye, 1-1/4" Body, 31.7mm Pin	1 1/4	31.7	1 1/4	535	21 1/16	758	29 27/32	36200	79640

Turnbuckle / Fittings / Assemblies

Closed Turnbuckle, Fixed Jaw-Fixed Jaw

Finish: Chrome-C or Bronze-B



SKU	Name	Body Thread	Ø Pin		L Closed		L Open		Break Load	
		UNF	mm	Inch	mm	Inch	mm	Inch	Kg	lbs
CBFTB08	Closed Turnbuckle, Fixed Jaw-Fixed Jaw, 1/4"	1/4"	6.35	1/4	172.0	6 25/32	254.0	10	1250	2750
CBFTB10	Closed Turnbuckle, Fixed Jaw-Fixed Jaw, 5/16"	5/16"	8.0	5/16	196.0	7 23/32	279.0	10 31/32	1950	4290
CBFTB12	Closed Turnbuckle, Fixed Jaw-Fixed Jaw, 3/8"	3/8"	9.5	3/8	222.0	8 3/4	315.0	12 13/32	2950	6490
CBFTB14	Closed Turnbuckle, Fixed Jaw-Fixed Jaw, 7/16"	7/16"	11.0	7/16	270.0	10 5/8	373.0	14 11/16	3450	7590
CBFTB16	Closed Turnbuckle, Fixed Jaw-Fixed Jaw, 1/2"	1/2"	12.7	1/2	270.0	10 5/8	373.0	14 11/16	4680	10296
CBFTB20	Closed Turnbuckle, Fixed Jaw-Fixed Jaw, 5/8"	5/8"	16.0	5/8	336.0	13 7/32	462.0	18 3/16	7725	16995
CBFTB24	Closed Turnbuckle, Fixed Jaw-Fixed Jaw, 3/4"	3/4"	19.2	3/4	404.0	15 29/32	573	22 9/16	13100	28820

Closed Turnbuckle, Toggle-Toggle

Finish: Chrome-C or Bronze-B



SKU	Name	Body Thread	Ø Pin		L Closed		L Open		Break Load	
		UNF	mm	Inch	mm	Inch	mm	Inch	Kg	lbs
CBTT08	Closed Turnbuckle, Toggle-Toggle, 1/4", 6.5mm Pin	1/4"	6.35	1/4	181.0	7 1/8	260.0	10 15/64	1500	3300
CBTT10	Closed Turnbuckle, Toggle-Toggle, 5/16", 8mm Pin	5/16"	8.0	5/16	223.0	8 25/32	303.0	11 30/32	2300	5060
CBTT12	Closed Turnbuckle, Toggle-Toggle, 3/8", 9.5mm Pin	3/8"	9.5	3/8	241.0	9 1/2	331.0	13 1/32	4000	8800
CBTT14	Closed Turnbuckle, Toggle-Toggle, 7/16", 11mm Pin	7/16"	11.0	7/16	298.0	11 23/32	395.0	15 9/16	5200	11440
CBTT16	Closed Turnbuckle, Toggle-Toggle, 1/2", 12.7mm Pin	1/2"	12.7	1/2	298.0	11 23/32	395.0	15 9/16	6800	14960
CBTT20	Closed Turnbuckle, Toggle-Toggle, 5/8", 16mm Pin	5/8"	16.0	5/8	370.0	14 9/16	486.0	19 1/8	9900	21780
CBTT24	Closed Turnbuckle, Toggle-Toggle, 3/4", 19.2mm Pin	3/4"	19.2	3/4	458.0	18 1/32	609	23 31/32	13600	29920
CBTT28	Closed Turnbuckle, Toggle-Toggle, 7/8", 22.2mm Pin	7/8"	22.2	7/8	564	22 13/64	755	29 23/32	20400	44880
CBTT32	Closed Turnbuckle, Toggle-Toggle, 1", 25.4mm Pin	1"	25.4	1	648	25 1/2	860	33 27/32	27250	59950
CBTT40	Closed Turnbuckle, Toggle-Toggle, 1-1/4", 31.7mm Pin	1-1/4"	31.7	1 1/4	740	29 1/8	980	38 19/32	36200	79640

Turnbuckle / Fittings / Assemblies

Closed Turnbuckle Toggle-Stud

Finish: Chrome-C or Bronze-B



SKU	Name	Wire Size		Body Thread	Ø Pin		L Closed		L Open		Break Load	
		mm	Inch		mm	Inch	mm	Inch	mm	Inch	Kg	lbs
CB040808	Closed Turnbuckle, Toggle-Stud, 1/4", 3mm Stud	3.0	1/8	1/4	6.35	1/4	171.0	6 23/32	260.0	10 15/64	1500	3300
CB050808	Closed Turnbuckle, Toggle-Stud, 1/4", 4mm Stud	4.0	5/32	1/4	6.35	5/16	171.0	6 23/32	260.0	10 15/64	1500	3300
CB051010	Closed Turnbuckle, Toggle-Stud, 5/16", 4mm Stud	4.0	5/32	5/16	8.0	5/16	171.0	6 23/32	260.0	10 15/64	1500	3300
CB060808	Closed Turnbuckle, Toggle-Stud, 1/4", 5mm Stud	5.0	3/16	1/4	8.0	5/16	199.0	7 27/32	282.0	11 3/32	2300	5060
CB061010	Closed Turnbuckle, Toggle-Stud, 5/16", 5mm Stud	5.0	3/16	5/16	8.0	5/16	199.0	7 27/32	282.0	11 3/32	2300	5060
CB061210	Closed Turnbuckle, Toggle-Stud, 3/8", 5mm	5.0	3/16	3/8	8.0	3/8	219.0	8 5/8	312.0	12 9/32	6000	8800
CB061212	Closed Turnbuckle, Toggle-Stud, 3/8", 5mm Stud	5.0	3/16	3/8	9.5	3/8	219.0	8 5/8	312.0	12 9/32	4000	8800
CB071212	Closed Turnbuckle, Toggle-Stud, 3/8", 5.5mm Stud	5.5	7/32	3/8	9.5	3/8	219.0	8 5/8	312.0	12 9/32	4000	8800
CB071414	Closed Turnbuckle, Toggle-Stud, 7/16", 5.5mm Stud	5.5	7/32	3/8	9.5	7/16	215.0	8 15/32	308.0	12 1/8	4000	8800
CB081212	Closed Turnbuckle, Toggle-Stud, 3/8", 6mm Stud	6.0	1/4	7/16	11.0	7/16	215.0	8 15/32	308.0	12 1/8	5200	11440
CB081414	Closed Turnbuckle, Toggle-Stud, 7/16", 6mm Stud	6.0	1/4	7/16	11.0	7/16	263.0	10 11/32	366.0	14 13/32	5200	11440
CB081616	Closed Turnbuckle, Toggle-Stud, 1/2", 6mm Stud	6.0	1/4	7/16	11.0	1/2	263.0	10 11/32	366.0	14 13/32	5200	11440
CB091414	Closed Turnbuckle, Toggle-Stud, 7/16", 7mm Stud	7.0	9/32	1/2	12.7	1/2	262.0	10 5/16	365.0	14 3/8	6800	14960
CB091616	Closed Turnbuckle, Toggle-Stud, 1/2", 7mm Stud	7.0	9/32	1/2	12.7	1/2	265.0	10 7/16	368.0	14 1/2	6800	14960
CB101616	Closed Turnbuckle, Toggle-Stud, 1/2", 8mm Stud	8.0	5/16	1/2	12.7	1/2	265.0	10 7/16	368.0	14 1/2	6800	14960
CB101620	Closed Turnbuckle, Toggle-Stud, 1/2", 8mm	8.0	5/16	1/2	16.0	5/8	265.0	10 7/16	368.0	14 1/2	6800	14960
CB102020	Closed Turnbuckle, Toggle-Stud, 5/8", 8mm Stud	8.0	5/16	5/8	16.0	5/8	315.0	12 13/32	441.0	17 23/64	9900	21780
CB112020	Closed Turnbuckle, Toggle-Stud, 5/8", 9mm Stud	9.0	N/A	5/8	16.0	5/8	315.0	12 13/32	441.0	17 23/64	9900	21780
CB122020	Closed Turnbuckle, Toggle-Stud, 5/8", 10mm Stud	10.0	3/8	5/8	16.0	5/8	315.0	12 13/32	441.0	17 23/64	9900	21780
CB122424	Closed Turnbuckle, Toggle-Stud, 3/4", 1mm Stud	10.0	3/8	3/4	19.2	3/4	375.0	14 3/4	544	21 13/32	13600	29920
CB142424	Closed Turnbuckle, Toggle-Stud, 3/4", 11 mm Stud	11.0	7/16	3/4	19.2	3/4	375.0	14 3/4	544	21 13/32	13600	29920
CB162424	Closed Turnbuckle, Toggle-Stud, 3/4", 12mm Stud	12.0	1/2	3/4	19.2	3/4	375.0	14 3/4	544	21 13/32	13600	29920
CB162828	Closed Turnbuckle, Toggle-Stud, 7/8", 12mm Stud	12.0	1/2	7/8	22.2	7/8	460.0	18 7/64	650	25 19/32	20400	44880
CB182828	Closed Turnbuckle, Toggle-Stud, 7/8", 14mm Stud	14.0	9/16	7/8	22.2	7/8	460.0	18 7/64	650	25 19/32	20400	44880
CB203232	Closed Turnbuckle, Toggle-Stud, 1", 16mm Stud	16.0	5/8	1.0	25.4	1	522	20 9/16	722	28 7/16	27250	59950
CB244040	Closed Turnbuckle, Toggle-Stud, 1-1/4" 19mm Stud	19.0	3/4	1 1/4	31.7	1 1/4	600	23 5/8	840	33 2/32	36200	79640

Turnbuckle / Fittings / Assemblies

Open Turnbuckle Eye-Eye

Finish: Chrome-C or Bronze-B



SKU	Name	Body Thread	Ø Pin		Break Load		
		UNF	mm	Inch	Kg	lbs	
EE08	Open Turnbuckle, Eye-Eye, 1/4" Thread	1/4	6.35	1/4	1500	3300	
EE10	Open Turnbuckle, Eye-Eye, 5/16" Thread	5/16	8.0	5/16	2300	5060	
EE12	Open Turnbuckle, Eye-Eye, 3/8" Thread	3/8	9.5	3/8	4000	8800	
EE14	Open Turnbuckle, Eye-Eye, 7/16" Thread	7/16	11.0	7/16	5200	11440	
EE16	Open Turnbuckle, Eye-Eye, 1/2" Thread	1/2	12.7	1/2	6800	14960	
EE20	Open Turnbuckle, Eye-Eye, 5/8" Thread	5/8	16.0	5/8	9900	21780	
EE24	Open Turnbuckle, Eye-Eye, 3/4" Thread	3/4	19.2	3/4	13600	29920	
EE28	Open Turnbuckle, Eye-Eye, 7/8" Thread	7/8	22.2	7/8	20400	44880	
EE32	Open Turnbuckle, Eye-Eye, 1" Thread	1.0	25.4	1	27250	59950	

Open Turnbuckle Toggle-None

Finish: Chrome-C or Bronze-B



SKU	Name	Ø Pin		Body Thread	Break Load	
		mm	Inch	UNF	Kg	lbs
TS00808	Open Turnbuckle, Toggle-None, 1/4" Thread	6.35	1/4	1/4	1500	3300
TS001010	Open Turnbuckle, Toggle-None, 5/16" Thread	8.0	5/16	5/16	2300	5060
TS001210	Open Turnbuckle, Toggle-None, 3/8" Thread	8.0	5/16	3/8	2300	5060
TS001212	Open Turnbuckle, Toggle-None, 3/8" Thread	9.5	3/8	3/8	4000	8800
TS001414	Open Turnbuckle, Toggle-None, 7/16" Thread	11.0	7/16	7/16	5200	14140
TS001616	Open Turnbuckle, Toggle-None, 1/2" Thread	12.7	1/2	1/2	6800	14960
TS001620	Open Turnbuckle, Toggle-None, 1/2" Thread	16.0	5/8	1/2	6800	14960
TS002020	Open Turnbuckle, Toggle-None, 5/8" Thread	16.0	5/8	5/8	9900	21780
TS002424	Open Turnbuckle, Toggle-None, 3/4" Thread	19.2	3/4	3/4	9900	21780
TS002828	Open Turnbuckle, Toggle-None, 7/8" Thread	22.2	7/8	7/8	20400	44880
TS003232	Open Turnbuckle, Toggle-None, 1" Thread	25.4	1	1"	27250	59950

Turnbuckle / Fittings / Assemblies

Open Turnbuckle Toggle-Toggle

Finish: Chrome-C or Bronze-B



SKU	Name	Body Thread	ØPin		L Closed		L Open		Break Load	
		UNF	mm	Inch	mm	Inch	mm	Inch	Kg	lbs
TT08	Open Turnbuckle Toggle-Toggle 1/4"	1/4	6.35	1/4	176.0	7 5/32	252.0	9 29/32	1500	3300
TT10	Open Turnbuckle Toggle-Toggle 5/16"	5/16	8.0	5/16	218.0	8 27/32	306.0	12 1/16	2300	5060
TT12	Open Turnbuckle Toggle-Toggle 3/8"	3/8	9.5	3/8	244.0	9 19/32	343.0	13 1/2	4000	8800
TT14	Open Turnbuckle Toggle-Toggle 7/16"	7/16	11.0	7/16	298.0	11 23/32	397.0	15 5/8	5200	11440
TT16	Open Turnbuckle Toggle-Toggle 1/2"	1/2	12.7	1/2	298.0	11 23/32	405.0	15 30/32	6800	14960
TT20	Open Turnbuckle Toggle-Toggle 5/8"	5/8	16.0	5/8	368.0	14 1/2	494.0	19 7/16	9900	21780
TT24	Open Turnbuckle Toggle-Toggle 3/4"	3/4	19.2	3/4	450.0	17 23/32	630.0	24 26/32	13600	29920
TT28	Open Turnbuckle Toggle-Toggle 7/8"	7/8	22.2	7/8	580.0	22 7/16	776.0	30 9/16	20400	44880
TT32	Open Turnbuckle Toggle-Toggle 1"	1.0	25.4	1	658.0	25 29/32	886.0	34 7/8	27250	59950

Open Turnbuckle, Fixed Jaw-Fixed Jaw

Finish: Polished Bronze-B or Chrome-C



SKU	Name	Body Thread	ØPin		L Closed		L Open		Break Load	
		UNF	mm	Inch	mm	Inch	mm	Inch	Kg	lbs
FTB08	Open Turnbuckle, Fixed Jaw-Fixed Jaw, 1/4"	1/4	6.35	1/4	171.0	6 47/64	241.0	9 1/2	1125	2750
FTB10	Open Turnbuckle, Fixed Jaw-Fixed Jaw, 5/16"	5/16	8.0	5/16	197.0	7 3/4	282.0	11 3/32	1725	4290
FTB12	Open Turnbuckle, Fixed Jaw-Fixed Jaw, 3/8"	3/8	9.5	3/8	231.0	9 3/32	330.0	12 63/64	3000	6490
FTB14	Open Turnbuckle, Fixed Jaw-Fixed Jaw, 7/16"	7/16	11.0	7/16	270.0	10 5/8	375.0	14 3/4	3900	8580
FTB16	Open Turnbuckle, Fixed Jaw-Fixed Jaw, 1/2"	1/2	12.7	1/2	273.0	10 3/4	387.0	15 15/64	5100	10296
FTB20	Open Turnbuckle, Fixed Jaw-Fixed Jaw, 5/8"	5/8	16.0	5/8	342.0	13 15/32	520	20 15/32	7425	16995
FTB24	Open Turnbuckle, Fixed Jaw-Fixed Jaw, 3/4"	3/4	19.2	3/4	457.0	17 63/64	584	22 63/64	13100	28820

Turnbuckle / Fittings / Assemblies

Open Turnbuckle, Toggle-Stud

Finish: Chrome-C or Bronze-B



SKU	Name	Body Thread	ØPin		Wire Size		L Closed		L Open		Break Load	
		UNF	mm	Inch	mm	Inch	mm	Inch	mm	Inch	Kg	lbs
TS040808	Open Turnbuckle, Toggle-Stud, 1/4", 3mm Stud	1/4	6.35	1/4	3.0	1/8	176.0	6 30/32	252.0	9 29/32	1500	3300
TS050808	Open Turnbuckle, Toggle-Stud, 1/4", 4mm Stud	1/4	6.35	1/4	4.0	5/32	176.0	6 30/32	252.0	9 29/32	1500	3300
TS051010	Open Turnbuckle, Toggle-Stud, 5/16", 4mm Stud	5/16	8.0	5/16	4.0	5/32	204.0	8 1/32	284.0	11 3/16	2300	5060
TS060808	Open Turnbuckle, Toggle-Stud, 1/4", 5mm Stud	1/4"	6.5	1/4	5.0	3/16	176.0	6 30/32	252.0	9 29/32	1500	3300
TS061010	Open Turnbuckle, Toggle-Stud, 5/16", 5mm Stud	5/16	8.0	5/16	5.0	3/16	204.0	8 1/32	284.0	11 3/16	2300	5060
TS061210	Open Turnbuckle, Toggle-Stud, 3/8", 5mm Stud	3/8	8.0	5/16	5.0	3/16	223.0	8 25/32	323.0	12 23/32	4000	8800
TS061212	Open Turnbuckle, Toggle-Stud, 3/8", 5mm Stud	3/8	9.5	3/8	5.0	3/16	223.0	8 25/32	323.0	12 23/32	4000	8800
TS071212	Open Turnbuckle, Toggle-Stud, 3/8", 5.5mm Stud	3/8	9.5	3/8	5.5	7/32	223.0	8 25/32	323.0	12 23/32	4000	8800
TS071414	Open Turnbuckle, Toggle-Stud, 7/16", 5.5mm Stud	7/16	11.0	7/16	5.5	7/32	268.0	10 9/16	373.0	14 22/32	5200	114401
TS081212	Open Turnbuckle, Toggle-Stud, 3/8", 6mm Stud	3/8	9.5	3/8	6.0	1/4	226.0	8 29/32	326.0	12 27/32	4000	8800
TS081414	Open Turnbuckle, Toggle-Stud, 7/16", 6mm Stud	7/16	11.0	7/16	6.0	1/4	265.0	10 7/16	370.0	14 9/16	5200	11440
TS081616	Open Turnbuckle, Toggle-Stud, 1/2", 6mm Stud	1/2	12.7	1/2	6.0	1/4	267.0	10 1/2	372.0	14 21/32	6800	14960
TS091414	Open Turnbuckle, Toggle-Stud, 7/16", 7mm Stud	7/16	11.0	7/16	7.0	9/32	268.0	10 9/16	373.0	14 22/32	5200	11440
TS091616	Open Turnbuckle, Toggle-Stud, 1/2", 7mm Stud	1/2	12.7	1/2	7.0	9/32	270.0	10 5/8	375.0	14 3/4	6800	14960
TS101616	Open Turnbuckle, Toggle-Stud, 1/2", 8mm Stud	1/2"	12.7	1/2	8.0	5/16	270.0	10 5/8	375.0	14 3/4	6800	14960
TS101620	Open Turnbuckle, Toggle-Stud, 1/2", 8mm Stud	1/2	16.0	5/8	8.0	5/16	270.0	10 5/8	375.0	14 3/4	6800	14960
TS102020	Open Turnbuckle, Toggle-Stud, 5/8", 8mm Stud	5/8	16.0	5/8	8.0	5/16	320.0	12 19/32	456.0	17 30/32	9900	21780
TS112020	Open Turnbuckle, Toggle-Stud, 5/8", 9mm Stud	5/8	16.0	5/8	9.0	23/64	320.0	12 19/32	456.0	17 30/32	9900	21780
TS122020	Open Turnbuckle, Toggle-Stud, 5/8", 10mm Stud	5/8	16.0	5/8	10.0	3/8	320.0	12 19/32	456.0	17 30/32	9900	21780
TS122424	Open Turnbuckle, Toggle-Stud, 3/4", 10mm Stud	3/4	19.2	3/4	10.0	3/8	380.0	14 31/32	573.0	22 9/16	13600	29920
TS142424	Open Turnbuckle, Toggle-Stud 3/4", 11mm Stud	3/4	19.2	3/4	11.0	7/16	380.0	14 31/32	573.0	22 9/16	13600	29920
TS162424	Open Turnbuckle, Toggle-Stud, 3/4", 12mm Stud	3/4	19.2	3/4	12.0	1/2	380.0	14 31/32	573.0	22 9/16	13600	29920
TS162828	Open Turnbuckle, Toggle-Stud, 7/8", 12mm Stud	7/8*	22.2	7/8	12.0	1/2	468.0	18 7/16	678.0	26 22/32	20400	44880
TS182828	Open Turnbuckle, Toggle-Stud, 7/8", 14mm Stud	7/8*	22.2	7/8	14.0	9/16	468.0	18 7/16	678.0	26 22/32	20400	44880
TS203232	Open Turnbuckle, Toggle-Stud, 1", 16mm Stud	1*	25.4	1	16.0	5/8	528.0	20 25/32	758.0	29 27/32	27250	59950

*SUPPLIED AS A THREADED EYE NOT T-BOLT

Turnbuckle / Fittings / Assemblies

Open Turnbuckle, Upset Toggle – None

Finish: Chrome-C or Bronze-B



SKU	Name	Wire Size		ØPin		L Closed		L Open		W		Break Load	
		mm	Inch	mm	Inch	mm	Inch	mm	Inch	mm	Inch	Kg	lbs
UTS000808	Open Turnbuckle, Upset Toggle - None, 1/4"	3 or 4	1/8 or 5/32	6.35	1/4	95.0	3 47/64	134.0	5 9/32	4.8	3/16	1500	3300
UTS001010	Open Turnbuckle, Upset Toggle - None, 5/16"	4.0 - 5.0	5/32 - 3/16	8.0	5/16	110.0	4 21/64	155.0	6 2/16	7.1	9/32	2300	5060
UTS001212	Open Turnbuckle, Upset Toggle - None, 3/8"	5.0 - 6.0	3/16 - 1/4	9.5	3/8	128.0	5 3/64	182.0	7 3/16	9.8	3/8	4000	8800
UTS001414	Open Turnbuckle, Upset Toggle - None, 7/16"	5.5 - 7.0	7/32 - 9/32	11.3	7/16	145.0	5 11/16	195.0	7 11/16	9.8	3/8	5200	11440
UTS001616	Open Turnbuckle, Upset Toggle - None, 1/2"	6.0 - 8.0	1/4 - 5/16	12.7	1/2	147.0	5 13/16	200.0	7 7/8	13.5	17/32	6800	14960
UTS002020	Open Turnbuckle, Upset Toggle - None, 5/8"	8.0 - 10.0	1/4 - 5/16	16.0	5/8	207.0	8 5/32	270.0	10 5/8	17.5	22/32	9900	21780
UTS002424	Open Turnbuckle, Upset Toggle - None, 3/4"	10.0 - 12.0	3/8 - 1/2	19.2	3/4	245.0	9 10/16	338.0	13 5/16	19.0	3/4	13600	29920
UTS002828	Open Turnbuckle, Upset Toggle - None, 7/8"	12.0 - 14.0	1/2 - 9/16	22.0	7/8	290.0	11 7/16	390.0	15 3/8	22.5	7/8	20400	44880
UTS003232	Open Turnbuckle, Upset Toggle - None, 1"	16.0	5/8	25.0	31/32	330.0	12 63/64	435.0	17 1/8	25.4	1	27250	59950

Turnbuckle / Fittings / Bodies

Closed Body Turnbuckle

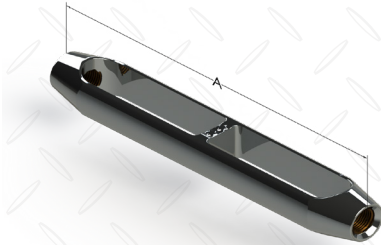
Finish: Chrome-C or Bronze-B



SKU	Name	Body Thread UNF	A		Break Load		B	
			mm	Inch	kg		mm	Inch
CB08	Closed Body Turnbuckle 1/4"	1/4	107.0	4 7/32	1500			
CB10	Closed Body Turnbuckle 5/16"	1/3	115.0	4 17/32	2300			
CB12	Closed Body Turnbuckle 3/8"	3/8	130.0	5 1/8	4000			
CB14	Closed Body Turnbuckle 7/16"	4/9	140.0	5 1/2	5200			
CB16	Closed Body Turnbuckle 1/2"	1/2	155.0	6 1/8	6800			
CB20	Closed Body Turnbuckle 5/8"	5/8	180.0	7 3/32	9900			
CB24	Closed Body Turnbuckle 3/4"	3/4	237.0	9 5/16	13600			
CB28	Closed Body Turnbuckle 7/8"	7/8	267.0	10 1/2	20400		37.0	1 15/32
CB32	Closed Body Turnbuckle 1"	1	292.0	11 1/2	27250			
CB40	Closed Body Turnbuckle 1 1/4"	1 1/4	330.0	12 3/4	36200			

Open Body Turnbuckle

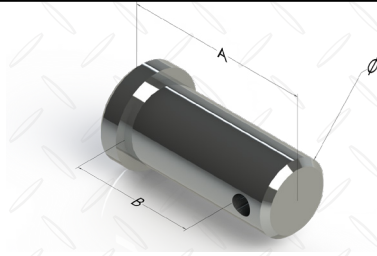
Finish: Polished Bronze-B or Chrome-C



SKU	Name	Body Thread UNF	A		Break Load		B	
			mm	Inch	Kg	lbs	mm	Inch
B08	Open Body Turnbuckle 1/4"	1/4	120.0	4 3/4	1500	3300		
B10	Open Body Turnbuckle 5/16"	5/16	131.0	5 5/32	2300	5060		
B12	Open Body Turnbuckle 3/8"	3/8	149.0	5 7/8	4000	8800		
B14	Open Body Turnbuckle 7/16"	7/16	163.0	6 7/16	5200	11440		
B16	Open Body Turnbuckle 1/2"	1/2	173.0	6 13/16	6800	14960		
B20	Open Body Turnbuckle 5/8"	5/8	205.0	8 5/64	9900	21780		
B24	Open Body Turnbuckle 3/4"	3/4	260.0	10 4/16	13600	29920		
B28	Open Body Turnbuckle 7/8"	7/8	300.0	11 7/8	20400	44880	48.5	1 15/16
B32	Open Body Turnbuckle 1"	1	330.0	12 3/4	27250	59950	55.0	2 5/32
B40	Open Body Turnbuckle 1 1/4"	1 1/4	N/A	N/A	36000	79200		

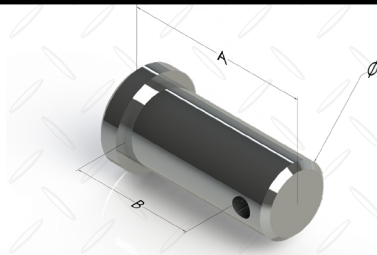
Turnbuckle / Fittings / Fittings

Clevis Pins Standard



SKU	Name	Ø		A Overall		B Working	
		mm	Inch	mm	Inch	mm	Inch
CP08	Clevis Pins 1/4"	6.5	1/4	18.5	3/4	13.0	1/2
CP10	Clevis Pins 5/16"	8.0	5/16	22.6	7/8	15.3	5/8
CP12	Clevis Pins 3/8"	9.5	3/8	25.6	1	17.5	11/16
CP14	Clevis Pins 7/16"	11.0	7/16	29.2	1 1/16	19.8	3/4
CP16	Clevis Pins 1/2"	12.7	1/2	32.0	1 1/4	24.0	15/16
CP20	Clevis Pins 5/8"	16.0	5/8	40.0	1 9/16	28.5	1 1/8
CP24	Clevis Pins 3/4"	19.2	3/4	50.0	2	32.0	1 1/4
CP28	Clevis Pins 7/8"	22.2	7/8	55.0	2 3/16	40.0	1 9/16
CP32	Clevis Pins 1"	25.4	1"	57.0	2 3/8	47.0	1 7/8
CP40	Clevis Pins 1 1/4"	32.0	1 1/4	64.0	2 1/2	60.0	2 3/8

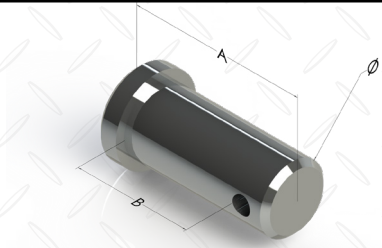
Clevis Pins for Forks



SKU	Name	Ø		A Overall		B Working	
		mm	Inch	mm	Inch	mm	Inch
CPAF03	Clevis Pins 3/16" For Forks	4.8	3/16	11.8	7/16	7.0	9/32
CPAF04	Clevis Pins 3/16" For Forks	4.8	3/16	14.8	9/16	10.0	13/32
CPAF05	Clevis Pins 1/4" For Forks	6.3	1/4	16.8	5/8	11.0	7/16
CPAF06	Clevis Pins 5/16" For Forks	8.0	5/16	20.0	3/4	14.0	9/16
CPAF07	Clevis Pins 5/16" For Forks	8.0	5/16	22.8	7/8	16.0	5/8
CPAF08	Clevis Pins 3/8" For Forks	9.5	3/8	25.6	1	17.5	11/16
CPAF09	Clevis Pins 7/16" For Forks	11.0	7/16	29.2	1 1/8	19.8	3/4
CPAF10	Clevis Pins 7/16" For Forks	11.0	7/16	30.0	1 1/16	19.8	3/4
CPAF12	Clevis Pins 1/2" For Forks	12.7	1/2	32.0	1 1/4	21.5	7/8
CPAF14	Clevis Pins 9/16" For Forks	14.0	9/16	33.0	1 1/4	21.5	7/8
CPAF14XL	Clevis Pins 9/16" For Forks XL	14.0	9/16	32.2	1 5/16	25.4	1"
CPAF16	Clevis Pins 5/8" For Forks	16.0	5/8	38.0	1 1/2	27.0	1 1/16

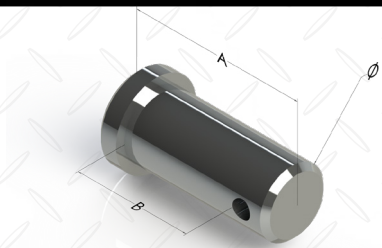
Turnbuckle / Fittings / Fittings

Clevis Pins for Fixed Toggles and Jaws



SKU	Name	Ø		A Overall		B Working	
		mm	Inch	mm	Inch	mm	Inch
CPFT08	Clevis Pins 1/4" For FT & FJ	6.3	1/4	20.0	3/4	15.5	5/8
CPFT10	Clevis Pins 5/16" For FJ	8.0	5/16	24.0	15/16	17.5	11/16
CPFT12	Clevis Pins 3/8" For FJ	9.5	3/8	28.0	1 1/8	20.6	13/16
CPFT14	Clevis Pins 7/16" For FJ	11.0	7/16	37.0	1 7/16	28.5	1 1/8
CPFT16	Clevis Pins 1/2" For & FJ	12.5	1/2	37.0	1 7/16	28.5	1 1/8
CPFT20	Clevis Pins 5/8" For FJ	16.0	5/8	44.0	1 3/4	33.4	1 5/16
CPFT24	Clevis Pins 3/4" For FT & FJ	19.2	3/4	52.0	2 1/16	40.0	1 9/16

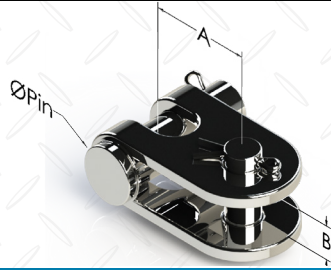
Long Clevis Pin for use with Double Jaw Toggles



SKU	Name	Ø		A Overall		B Working	
		mm	Inch	mm	Inch	mm	Inch
LCP08	Clevis Pin 1/4" Long	6.4	1/4	26.0	1 1/32	20.6	13/16
LCP10	Clevis Pin 5/16" Long	8.0	5/16	29.6	1 11/64	22.2	7/8
LCP12	Clevis Pin 3/8" Long	9.5	3/8	35.2	1 25/64	27.1	1 1/16
LCP14	Clevis Pin 7/16" Long	11.0	7/16	41.5	1 41/64	31.8	1 1/4
LCP16	Clevis Pins 1/2" Long	12.7	1/2	50.0	1 31/32	36.0	1 27/64
LCP20-10	Clevis Pins 5/8" Long	16.0	5/8	55.0	2 11/64	44.5	1 3/4
LCP20-12	Clevis Pins 5/8" Long	16.0	5/8	60.0	2 3/8	49.2	1 15/16
LCP24	Clevis Pins 3/4" Long	19.2	3/4	69.0	2 23/32	54.0	2 1/8
LCP28	Clevis Pins 7/8" Long	22.2	7/8	78.0	3 1/16	64.0	2 1/2
LCP32	Clevis Pins 1" Long	25.4	1	88.0	3 15/32	71.0	2 13/16

Turnbuckle / Fittings / Fittings

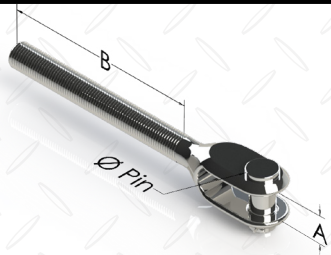
Double Jaw Toggles



SKU	Name	ØPin		A		B		For Eye
		mm	Inch	mm	Inch	mm	Inch	SKU
DJT08	Double Jaw Toggle, 1/4" Primary Pin	6.35	1/4	22.0	7/8	8.0	5/16	ME04
DJT10	Double Jaw Toggle, 5/16" Primary Pin	8.0	5/16	31.0	1 1/4	10.0	3/8	ME05
DJT12	Double Jaw Toggle, 3/8" Primary Pin	9.5	3/8	34.0	1 5/16	11.0	7/16	ME06
DJT14	Double Jaw Toggle, 7/16" Primary Pin	11.0	7/16	34.0	1 5/16	13.0	1/2	ME07
DJT16	Double Jaw Toggle, 1/2" Primary Pin	12.7	1/2	41.0	1 5/8	14.0	9/16	ME08 or ME09 or ME10
DJT20-10	Double Jaw Toggle, 5/8" Primary Pin	16.0	5/8	55.0	2 3/16	19.0	3/4	ME10S
DJT20-12	Double Jaw Toggle, 5/8" Primary Pin	16.0	5/8	66.0	2 5/8	20.0	13/16	ME12
DJT24	Double Jaw Toggle, 3/4" Primary Pin	19.2	3/4	83.0	3 1/4	24.0	15/16	ME-14
DJT28	Double Jaw Toggle, 7/8" Primary Pin	22.2	7/8	92.0	3 5/8	28.0	1 1/8	ME16 or ME18
DJT32	Double Jaw Toggle, 1" Primary Pin	25.4	1	98.0	3 13/16	29.0	1 5/32	ME20
DJT40	Double Jaw Toggle, 1 1/4" Primary Pin	32.0	1 1/4	114.0	4 1/2	37.0	1 7/16	N/A

Fixed Jaws

Finish: Polished Bronze-B or Chrome-C | Left hand -L or Right hand - R

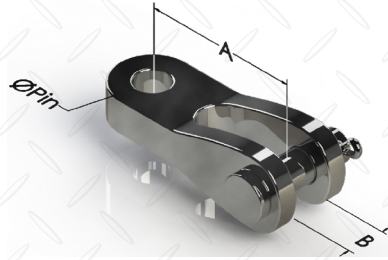


SKU	Name	ØPin		A		B	
		mm	Inch	mm	Inch	mm	Inch
FJ08	Fixed Jaws 1/4"	6.35	1/4	6.35	1/4	56.0	2 3/16
FJ10	Fixed Jaws 5/16"	8.0	5/16	8.0	5/16	61.0	2 3/8
FJ12	Fixed Jaws 3/8"	9.5	3/8	9.5	3/8	70.0	2 3/4
FJ14	Fixed Jaws 7/16"	11.0	7/16	11.1	7/16	73.0	2 7/8
FJ16	Fixed Jaws 1/2"	13.0	1/2	13.0	1/2	80.0	3 1/8
FJ20	Fixed Jaws 5/8"	16.0	5/8	16.0	5/8	96.0	3 3/4
FJ24	Fixed Jaws 3/4"	19.5	3/4	19.5	3/4	125.0	4 15/16

Turnbuckle / Fittings / Fittings

Fixed Toggles

Finish: Polished Bronze-B or Chrome-C



SKU	Name	∅Pin		A		B	
		mm	Inch	mm	Inch	mm	Inch
FT08	Fixed Toggle, 1/4"	6.5	1/4	27.0	1 2/32	6.7	1/4
FT10	Fixed Toggle, 5/16"	8.0	5/16	33.0	19/64	8.3	5/16
FT12	Fixed Toggle, 3/8"	9.5	3/8	40.0	19/16	10.0	25/64
FT14	Fixed Toggle, 7/16"	11.0	7/16	48.0	1 14/16	13.5	17/32
FT16	Fixed Toggle, 1/2"	12.7	1/2	48.0	1 14/16	13.5	17/32
FT20	Fixed Toggle, 5/8"	16.0	5/8	65.0	2 9/16	16.7	21/32
FT24	Fixed Toggle, 3/4"	19.2	3/4	82.0	3 7/32	19.8	25/32

Lock Nuts

Please advise: Left Hand-L or Right Hand-R

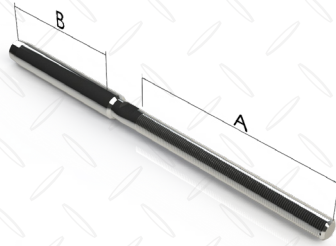


SKU	Name	UNF
		Inch
LN08	Lock Nut 1/4"	1/4
LN10	Lock Nut 5/16"	5/16
LN12	Lock Nut 3/8"	3/8
LN14	Lock Nut 7/16"	7/16
LN16	Lock Nut 1/2"	1/2
LN20	Lock Nut 5/8"	5/8
LN24	Lock Nut 3/4"	3/4
LN28	Lock Nut 7/8"	7/8
LN32	Lock Nut 1"	1
LN40	Lock Nut 1 1/4"	1 1/4

Turnbuckle / Fittings / Fittings

Swage Stud Standard Series Swage Stud

Please advise: Left Hand-L or Right Hand-R

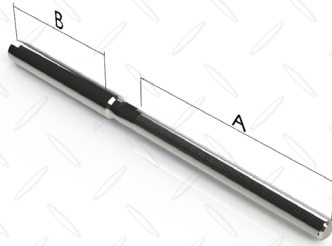


SKU	Name	Wire Size		Body Thread	A-Thread Length		B-Swage Depth		L	
		mm	Inch	UNF	mm	Inch	mm	Inch	mm	Inch
SS04-1/4	Swage Stud 3mm Wire 1/4" Thread	3.0	1/8	1/4"	56.0	2 3/16	40.0	1 9/16	125.4	4 30/32"
SS05-1/4	Swage Stud 4mm Wire 1/4" Thread	4.0	5/32	1/4"	56.0	2 3/16	48.0	1 57/64	131.2	5 5/32"
SS05-5/16	Swage Stud 4mm Wire 5/16" Thread	4.0	5/32	5/16"	61.0	2 3/8	48.0	1 57/64	136.9	5 3/8"
SS06-1/4	Swage Stud 5mm Wire 1/4" Thread	5.0	3/16	1/4"	56.0	2 3/16	59.0	2 5/8	145.0	5 11/16"
SS06-5/16	Swage Stud 5mm Wire 5/16" Thread	5.0	3/16	5/16"	61.0	2 3/8	59.0	2 5/8	150.8	5 30/32"
SS06-3/8	Swage Stud 5mm Wire 3/8" Thread	5.0	3/16	3/8"	70.0	2 3/4	59.0	2 5/8	158.8	6 1/4"
SS07-3/8	Swage Stud 5.5mm Wire 3/8" Thread	5.5	7/32	3/8"	70.0	2 3/4	64.0	2 3/4	161.9	6 3/8"
SS07-7/16	Swage Stud 5.5mm Wire 7/16" Thread	5.5	7/32	7/16"	75.0	2 31/32	64.0	2 3/4	168.3	6 5/8"
SS08-3/8	Swage Stud 6mm Wire 3/8" Thread	6.0	1/4	3/8"	70.0	2 3/4	79.0	3 1/8	213.0	8 3/8"
SS08-7/16	Swage Stud 6mm Wire 7/16" Thread	6.0	1/4	7/16"	75.0	2 31/32	79.0	3 1/8	232.0	9 1/8"
SS08-1/2	Swage Stud 6mm Wire 1/2" Thread	6.0	1/4	7/16"	80.0	3 5/32	79.0	3 1/8	190.5	7 1/2"
SS09-7/16	Swage Stud 7mm Wire 7/16" Thread	7.0	9/32	1/2"	75.0	2 31/32	82.0	3 15/64	190.5	7 1/2"
SS09-1/2	Swage Stud 7mm Wire 1/2" Thread	7.0	9/32	7/16"	80.0	3 5/32	82.0	3 15/64	220.7	8 22/32"
SS10-1/2	Swage Stud 8mm Wire 1/2" Thread	8.0	5/16	1/2"	80.0	3 5/32	89.0	3 1/2	215.9	8 1/2"
SS10-5/8	Swage Stud 8mm Wire 5/8" Thread	8.0	5/16	5/8"	97.0	3 13/16	89.0	3 1/2	221.5	8 23/32"
SS11-5/8	Swage Stud 9mm Wire 5/8" Thread	9.0	N/A	5/8"	97.0	3 13/16	115.0	4 17/32	244.0	9 5/8"
SS12-5/8	Swage Stud 10mm Wire 5/8" Thread	10.0	3/8	5/8"	97.0	3 13/16	115.0	4 17/32	244.0	9 19/32"
SS12-3/4	Swage Stud 10mm Wire 3/4" Thread	10.0	3/8	3/4"	125.0	4 15/16	115.0	4 17/32	274.0	10 3/4"
SS14-3/4	Swage Stud 11mm Wire 3/4" Thread	11.0	7/16	3/4"	125.0	4 15/16	142.0	5 19/32	295.3	11 5/8"
SS14-7/8	Swage Stud 11mm Wire 7/8" Thread	11.0	7/16	7/8"	145.0	5 23/32	142.0	5 19/32	314.0	12 3/8"
SS16-3/4	Swage Stud 12mm Wire 3/4" Thread	12.0	1/2	3/4"	125.0	4 15/16	162.0	6 3/8	339.7	13 3/8"
SS16-7/8	Swage Stud 12mm Wire 7/8" Thread	12.0	1/2	7/8"	145.0	5 23/32	162.0	6 3/8	339.7	13 3/8"
SS18-7/8	Swage Stud 14mm Wire 7/8" Thread	14.0	9/16	7/8"	145.0	5 23/32	175.0	6 57/64	355.6	14"
SS20-1	Swage Stud 16mm Wire 1" Thread	16.0	5/8	1"	158.0	6 7/32	210.0	8 17/64	428.6	16 7/8"
SS24-1 1/4	Swage Stud 19mm Wire 1 1/4" Thread	19.0	3/4	1 1/4"	165.0	6 1/2	245.0	9 41/64	476.3	18 3/4"

Turnbuckle / Fittings / Fittings

Swage Stud Long Series Swage Stud

Please advise: Left Hand-L or Right Hand-R



SKU	Name	Wire Size		Body Thread	A-Thread Length		B-Swage Depth		L	
		mm	Inch	UNF	mm	Inch	mm	Inch	mm	Inch
SSL04-1/4	Swage Stud Long Series, 3mm Wire, 1/4" Thread	3.0	1/8	1/4"	76.0	3"	42.0	1 5/8	146.0	5 3/4"
SSL05-1/4	Swage Stud Long Series, 4mm Wire, 1/4" Thread	4.0	5/32	1/4"	76.0	3"	48.0	1 7/8	152.5	6"
SSL05-5/16	Swage Stud Long Series, 4mm Wire, 5/16" Thread	4.0	5/32	5/16"	89.0	3 1/2	48.0	1 7/8	165.0	6 1/2"
SSL06-1/4	Swage Stud Long Series, 5mm Wire, 1/4" Thread	5.0	3/16	1/4"	76.0	3"	59.0	2 5/16	165.0	6 1/2"
SSL06-5/16	Swage Stud Long Series, 5mm Wire, 5/16" Thread	5.0	3/16	5/16"	89.0	3 1/4	59.0	2 5/16	165.0	6 1/2"
SSL06-3/8	Swage Stud Long Series, 5mm Wire, 3/8" Thread	5.0	3/16	3/8"	105.0	4 1/8	59.0	2 5/16	188.0	7 3/8"
SSL07-3/8	Swage Stud Long Series, 5.5mm Wire, 3/8" Thread	5.5	7/32	3/8"	105.0	4 1/8	64.0	2 1/2	197.0	7 3/4"
SSL07-7/16	Swage Stud Long Series, 5.5mm Wire, 7/16" Thread	5.5	7/32	7/16"	124.0	4 7/8	64.0	2 1/2	216.0	8 1/2"
SSL08-3/8	Swage Stud Long Series, 6mm Wire, 3/8" Thread	6.0	1/4	3/8"	105.0	4 1/8	79.0	3 7/64	213.0	8 3/8"
SSL08-7/16	Swage Stud Long Series, 6mm Wire, 7/16" Thread	6.0	1/4	7/16"	124.0	4 7/8	79.0	3 7/64	232.0	9 1/8"
SSL08-1/2	Swage Stud Long Series, 6mm Wire, 1/2" Thread	6.0	1/4	1/2"	136.0	5 3/8	79.0	3 7/64	244.5	9 5/8"
SSL09-7/16	Swage Stud Long Series, 7mm Wire, 7/16" Thread	7.0	9/32	7/16"	124.0	4 7/8	82.0	3 15/64	238.0	9 3/8"
SSL09-1/2	Swage Stud Long Series, 7mm Wire, 1/2" Thread	7.0	9/32	1/2"	136.0	5 3/8	82.0	3 15/64	251.0	9 7/8"
SSL10-1/2	Swage Stud Long Series, 8mm Wire, 1/2" Thread	8.0	5/16	1/2"	136.0	5 3/8	89.0	3 1/2	260.5	10 1/4"
SSL10-5/8	Swage Stud Long Series, 8mm Wire, 5/8" Thread	8.0	5/16	5/8"	191.0	7 17/32	89.0	3 1/2	314.5	12 3/8"
SSL11-5/8	Swage Stud Long Series, 9mm Wire, 5/8" Thread	9.0	N/A	5/8"	191.0	7 17/32	115.0	4 17/32	314.5	12 3/8"
SSL12-5/8	Swage Stud Long Series, 10mm Wire, 5/8" Thread	10.0	3/8	5/8"	191.0	7 17/32	115.0	4 17/32	336.5	13 1/4"
SSL12-3/4	Swage Stud Long Series, 10mm Wire, 3/4" Thread	10.0	3/8	3/4"	201.0	7 30/32	115.0	4 17/32	340.0	13 3/8"
SSL14-3/4	Swage Stud Long Series, 11mm Wire, 3/4" Thread	11.0	7/16	3/4"	201.0	7 30/32	142.0	5 19/32	368.5	14 1/2"
SSL16-3/4	Swage Stud Long Series, 12mm Wire, 3/4" Thread	12.0	1/2	3/4"	201.0	7 30/32	162.0	6 3/8	395.0	15 8/16"
SSL16-7/8	Swage Stud Long Series, 12mm Wire, 7/8" Thread	12.0	1/2	7/8"	235.0	9 1/4	162.0	6 3/8	428.5	16 7/8"
SSL18-7/8	Swage Stud Long Series, 14mm Wire, 7/8" Thread	14.0	9/16	7/8"	235.0	9 1/4	184.0	7 1/4	444.5	17 1/2"
SSL20-1	Swage Stud Long Series, 16mm Wire, 1" Thread	16.0	5/8	1"	N/A	N/A	N/A	N/A	N/A	N/A
SSL24-1 1/4	Swage Stud Long Series, 19mm Wire, 1 1/4" Thread	19.0	3/4	1 1/4"	N/A	N/A	N/A	N/A	N/A	N/A

Turnbuckle / Fittings / Fittings

T-Bolt

Please advise: Left Hand-L or Right Hand-R



SKU	Name	Body Thread	A-Thread Length		L		T.P.I
		UNF	mm	Inch	mm	Inch	mm
TB08	T-Bolt 1/4"	1/4	55.0	2 5/32	70.0	2 3/4	28.0
TB10	T-Bolt 5/16"	5/16	61.0	2 13/32	85.0	3 11/32	24.0
TB12	T-Bolt 3/8"	3/8	70.0	2 3/4	95.0	3 3/4	24.0
TB14	T-Bolt 7/16"	7/16	75.0	2 30/32	108.0	4 1/4	20.0
TB16	T-Bolt 1/2"	1/2	81.0	3 3/16	111.0	4 3/8	20.0
TB20	T-Bolt 5/8"	5/8	96.0	3 25/32	141.0	5 9/16	18.0
TB24	T-Bolt 3/4"	3/4	125.0	4 15/16	163.0	6 13/32	16.0

T-Bolt & Toggles

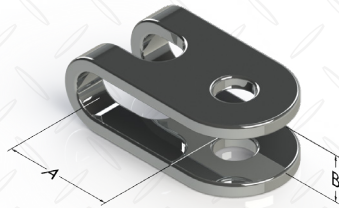
Please advise: Left Hand-L or Right Hand-R



SKU	Name	Body Thread	Ø Pin		A		B		C	
		UNF	mm	Inch	mm	Inch	mm	Inch	mm	Inch
TBT0808	T-Bolt With Toggle 1/4"	1/4	6.35	1/4	86.0	3 3/8	8.0	5/16	20.0	13/16
TBT1010	T-Bolt With Toggle 5/16"	5/16	8.0	5/16	102.0	4 1/64	10.0	3/8	29.0	1 5/32
TBT1210	T-Bolt With Toggle 3/8"	3/8	8.0	5/16	119.0	4 11/16	11.0	7/16	32.0	1 1/4
TBT1212	T-Bolt With Toggle 3/8"	3/8	9.5	3/8	119.0	4 11/16	11.0	7/16	32.0	1 1/4
TBT1414	T-Bolt With Toggle 7/16"	7/16	11.0	7/16	142.0	5 19/32	14.0	9/16	41.0	1 5/8
TBT1616	T-Bolt With Toggle 1/2"	1/2	12.7	1/2	142.0	5 19/32	16.0	5/8	36.0	1 7/16
TBT1620	T-Bolt With Toggle 1/2"	1/2	16.0	5/8	142.0	5 19/32	16.0	5/8	36.0	1 7/16
TBT2020	T-Bolt With Toggle 5/8"	5/8	16.0	5/8	177.0	6 31/32	18.5	3/4	48.0	1 7/8
TBT2424	T-Bolt With Toggle 3/4"	3/4	19.2	3/4	217.0	8 17/32	23.0	7/8	60.0	2 3/8
TET2828	Threaded Eye With Toggle 7/8"	7/8	22.2	7/8	275.0	10 26/32	27.5	1 1/8	N/A	N/A
TET3232	Threaded Eye With Toggle 1"	1	25.4	1	317.0	12 15/32	30.0	1 3/16	N/A	N/A
TET4040	Threaded Eye With Toggle 1 1/4"	1 1/4	31.5	1 1/4	375.0	14 3/4	37.0	1 7/16	N/A	N/A

Turnbuckle / Fittings / Fittings

T-Toggles



SKU	Name	ØPin		A		B		
		mm	Inch	mm	Inch	mm	Inch	
T008	T-Toggle 1/4"	6.3	1/4	20.0	13/16"	8.0	5/16"	
T010	T-Toggle 5/16"	8.0	5/16	29.0	1 5/32"	10.0	3/8"	
T012	T-Toggle 3/8"	9.5	3/8	32.0	1 1/4"	11.0	7/16"	
T014	T-Toggle 7/16"	11.0	7/16	41.0	1 5/8"	13.0	1/2"	
T016	T-Toggle 1/2"	12.7	1/2	36.0	1 7/16"	14.0	9/16"	
T020	T-Toggle 5/8"	16.0	5/8	48.0	1 7/8"	18.0	11/16"	
T024	T-Toggle 3/4"	19.0	3/4	60.0	2 3/8"	24.0	15/16"	
T028	T-Toggle 7/8"	22.0	7/8"	92.0	3 5/8"	28.0	1 1/8"	
T032	T-Toggle 1"	25.0	1"	98.0	3 13/16"	29.0	1 5/32"	
T040	T-Toggle 1 1/4"	32.0	1 1/4"	N/A	NA	37.0	1 7/16"	

Threaded Eyes

Please advise: Left Hand-L or Right Hand-R



SKU	Name	Body Thread	ØPin		A Thread Length		L		T.P.I./UNF
		UNF	mm	Inch	mm	Inch	mm	Inch	mm
TE08	Threaded Eyes 1/4"	1/4	6.35	1/4"	56.0	2 3/16"	76.0	2 63/64	28.0
TE10	Threaded Eyes 5/16"	5/16	8.0	5/16"	61.0	2 3/8"	84.0	3 5/16	24.0
TE12	Threaded Eyes 3/8"	3/8	9.5	3/8"	70.0	2 3/4"	96.0	3 3/4	24.0
TE14	Threaded Eyes 7/16"	7/16	11.0	7/16"	75.0	2 15/16"	106.0	4 11/64"	20.0
TE16	Threaded Eyes 1/2"	1/2	12.7	1/2"	80.0	3 5/32"	117.0	4 39/64"	20.0
TE20	Threaded Eyes 5/8"	5/8	16.0	5/8"	96.0	3 3/4"	139.0	5 15/32"	18.0
TE24	Threaded Eyes 3/4"	3/4	19.2	3/4"	125.0	4 15/16"	178.0	7 1/64	16.0
TE28	Threaded Eyes 7/8"	7/8	22.2	7/8"	145.0	5 3/4"	200.0	7 7/8	14.0
TE32	Threaded Eyes 1"	1	25.4	1"	158.0	6 7/32"	234.0	9 3/16	12.0
TE40	Threaded Eyes 1 1/4"	1 1/4	32.0	1 1/4"	190.0	7 1/2"	270.0	10 5/8	12.0

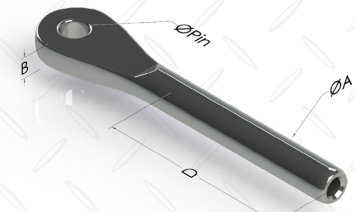
Swage Fittings

Chain Wire Swages



SKU	Name	Wire Size		Chain Pitch	A		Wire Depth	
		mm	Inch	Inch	mm	Inch	mm	Inch
CWS06-40	Chain Wire Swage, 5mm	5.0	3/16	1/2	10.9	27/64		
CWS06-50	Chain Wire Swage, 5mm	5.0	3/16	5/8	13.5	17/32		
CWS06-60	Chain Wire Swage, 5mm	5.0	3/16	3/4	17.4	11/16		
CWS07-50	Chain Wire Swage, 5.5mm	5.5	7/32	5/8	13.5	17/32		
CWS07-60	Chain Wire Swage, 5.5mm	5.5	7/32	3/4	17.4	11/16		
CWS08-50	Chain Wire Swage, 6mm	6.0	1/4	5/8	13.5	17/32		
CWS08-60	Chain Wire Swage, 6mm	6.0	1/4	3/4	17.4	11/16		
CWS09-50	Chain Wire Swage, 7mm	7.0	9/32	5/8	13.5	17/32		
CWS09-60	Chain Wire Swage, 7mm	7.0	9/32	3/4	17.4	11/16		
CWS10-50	Chain Wire Swage, 8mm	8.0	5/16	5/8	13.5	17/32		
CWS10-60	Chain Wire Swage, 8mm	8.0	5/16	3/4	17.4	11/16		
CWS12-60	Chain Wire Swage, 10mm	9.5	3/8	3/4	17.4	11/16		

Fork Eyes



SKU	Name	Wire Size		ØA- as supplied		ØA after swaging		B		ØPin		Wire Depth D	
		mm	Inch	mm	Inch	mm	Inch	mm	Inch	mm	Inch	mm	Inch
FE03	Fork Eyes 2.5mm	2.5	3/32	5.5	3/16	4.8	3/16	2.6	3/32"	4.9	3/16"	32.0	1 1/4"
FE04	Fork Eyes 3mm	3.0	1/8	6.4	1/4	5.6	1/4	4.8	3/16"	4.9	3/16"	40.0	1 9/16"
FE05	Fork Eyes 4mm	4.0	5/32	7.5	5/16	6.4	1/4	5.0	3/16"	6.6	1/4"	48.0	1 7/8"
FE06	Fork Eyes 5mm	5.0	3/16	9.1	3/8	8.0	5/16	6.5	1/4"	9.6	5/16"	54.0	2 1/8"
FE07	Fork Eyes 5.5mm	5.5	7/32	10.8	7/16	9.5	3/8	7.4	9/32"	8.1	5/16"	60.0	2 3/8"
FE08	Fork Eyes 6mm	6.0	1/4	12.5	1/2	11.1	7/16	7.8	5/16"	8.1	3/8"	64.0	2 17/32"
FE09	Fork Eyes 7mm	7.0	9/32	14.3	9/16	12.7	1/2	8.2	5/16"	11.2	7/16"	73.0	2 7/8"
FE10	Fork Eyes 8mm	8.0	5/16	17.9	11/16	14.3	9/16	8.7	11/32"	11.2	7/16"	75.0	3"
FE11	Fork Eyes 9mm	9.0	3/8	17.9	11/16	15.9	5/8	9.5	3/8"	12.9	1/2"	90.0	3 17/32"
FE12	Fork Eyes 10mm	10.0	3/8	19.8	3/4	15.9	5/8	9.5	3/8"	12.9	1/2"	94.0	3 1/16"
FE14	Fork Eyes 11mm	11.0	7/16	21.4	13/16	17.5	11/16	9.5	3/8"	14.2	1/2"	110.0	4 5/16"
FE16	Fork Eyes 12mm	12.0	1/2	21.4	13/16	19.1	3/4	11.9	15/32"	16.2	5/8"	127.0	5 5/16"

Swage Fittings

Fork Swages



SKU	Name	Wire Size		Ø Pin		A		B-Wire Depth	
		mm	Inch	mm	Inch	mm	Inch	mm	Inch
FS03	Fork Swages 2.5mm	2.5	3/32	4.8	3/16	2.8	7/64	32.0	1 1/4
FS04	Fork Swages 3mm	3.0	1/8	4.8	3/16	3.0	1/8	40.0	1 9/16
FS05	Fork Swages 4mm	4.0	5/32	6.5	1/4	5.1	13/64	48.0	1 7/8
FS06	Fork Swages 5mm	5.0	3/16	8.0	5/16	6.6	17/64	52.0	2 1/16
FS07	Fork Swages 5.5mm	5.5	7/32	8.0	5/16	7.5	19/64	60.0	2 3/8
FS08	Fork Swages 6mm	6.0	1/4	9.5	3/8	8.0	5/16	64.0	2 1/4
FS09	Fork Swages 7mm	7.0	9/32	11.0	14/32	8.3	21/64	79.0	3 3/32
FS10	Fork Swages 8mm	8.0	5/16	11.0	14/32	8.9	11/32	82.0	3 7/32
FS11	Fork Swages 9mm	9.0	11/32	12.7	1/2	9.7	3/8	82.0	3 7/32
FS12	Fork Swages 10mm	10.0	3/8	12.7	1/2	9.7	3/8	102.0	4
FS14	Fork Swages 11mm	11.0	7/16	14.0	9/16	9.7	3/8	115.0	4 1/2
FS16	Fork Swages 12mm	12.0	1/2	16.0	5/8	12.0	15/32	134.0	5 1/4

Furling Eye Swages



SKU	Name	Wire Size		A		B		C-Wire Depth	
		mm	Inch	mm	Inch	mm	Inch	mm	Inch
FESS03	Furling Eye Swage 2.5mm	2.0	3/32	24.0	15/16	14.0	9/16	32.0	1 1/4
FESS04	Furling Eye Swage 3mm	3.0	1/8	24.0	15/16	14.0	9/16	40.0	1 9/16
FESS05	Furling Eye Swage 4mm	4.0	5/32	28.0	1 3/32	16.0	5/8	48.0	1 7/8
FESS06	Furling Eye Swage 5mm	5.0	3/16	30.0	1 3/16	18.0	23/32	59.0	2 5/16
FESS07	Furling Eye Swage 5.5mm	5.5	7/32	35.0	1 3/8	18.0	23/32	64.0	2 1/2
FESS08	Furling Eye Swage 6mm	6.0	1/4	38.0	1 1/2	19.0	3/4	79.0	3 3/32
FESS09	Furling Eye Swage 7mm	7.0	9/32	38.0	1 1/2	19.0	3/4	82.0	3 7/32
FESS10	Furling Eye Swage 8mm	8.0	5/16	41.0	1 5/8	20.0	25/32	89.0	3 1/2
FESS11	Furling Eye Swage 9mm	9.0	11/32	45.0	1 3/4	21.0	13/16	115.0	4 1/2
FESS12	Furling Eye Swage 10mm	10.0	3/8	45.0	1 25/32	21.0	13/16	115.0	4 1/2
FESS14	Furling Eye Swage 11mm	11.0	7/16	45.0	1 25/32	21.0	13/16	124.0	4 7/8

* FURLING EYE THREADED AVAILABLE

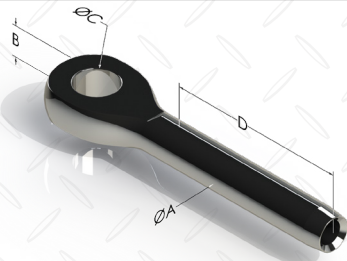
Swage Fittings

Hook Swages



SKU	Name	Wire Size		A-Wire Depth		Head Size	
		mm	Inch	mm	Inch	mm	Inch
HS0308	Hook Swage 2.5mm with 1/4" hook	2.5	1/4	32.0	1 1/4	6.4	1/4
HS0408	Hook Swage 3mm with 1/4" hook	3.0	5/16	40.0	1 9/16	6.4	1/4
HS0410	Hook Swage 3mm with 5/16" hook	3.0	5/16	40.0	1 9/16	8.0	5/16
HS0508	Hook Swage 4mm with 1/4" hook	4.0	5/32	48.0	1 7/8	6.4	1/4
HS0510	Hook Swage 4mm with 5/16" hook	4.0	5/32	48.0	1 7/8	8.0	5/16
HS0512	Hook Swage 4mm with 3/8" hook	4.0	5/32	48.0	1 7/8	9.5	3/8
HS0612	Hook Swage 5mm with 3/8" hook	5.0	3/16	59.0	2 5/16	9.5	3/8

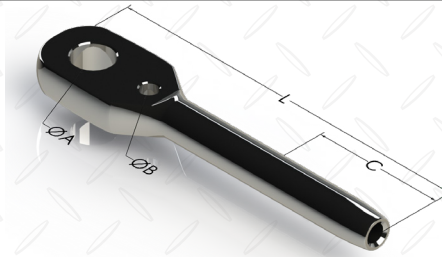
Marine Eyes



SKU	Name	Wire Size		ØA- as supplied		ØA after swaging		B		ØPin		Wire Depth-D	
		mm	Inch	mm	Inch	mm	Inch	mm	Inch	mm	Inch	mm	Inch
ME03	Marine Eye 2.5mm Eye	2.5	3/23	5.5	7/32	4.8	3/16	3.2	1/8	6.5	1/4	32.0	1 1/4
ME04	Marine Eye 3mm Eye	3.0	1/8	6.4	1/4	5.6	7/32	4.8	3/16	6.5	1/4	40.0	1 9/16
ME05	Marine Eye 4mm Eye	4.0	5/32	7.5	19/64	6.4	1/4	6.0	15/64	8.0	5/16	48.0	1 7/8
ME06	Marine Eye 5mm Eye	5.0	3/16	9.1	23/64	8.0	5/16	7.7	5/16	9.5	3/8	59.0	2 5/16
ME07	Marine Eye 5.5mm Eye	5.5	7/32	10.8	27/64	9.5	3/8	9.2	3/8	11.0	14/32	64.0	2 1/2
ME08	Marine Eye 6mm Eye	6.0	1/4	12.5	31/64	11.1	7/16	9.5	3/8	12.7	1/2	79.0	3 3/32
ME09	Marine Eye 7mm Eye	7.0	9/32	14.3	9/16	12.7	1/2	12.7	1/2	12.7	1/2	82.0	3 7/32
ME10-1/2	Marine Eye 8mm Eye	8.0	5/16	16.1	41/64	14.3	9/16	12.7	1/2	12.7	1/2	89.0	3 1/2
ME10-5/8	Marine Eye 8mm Eye	8.0	5/16	16.1	41/64	14.3	9/16	16.0	5/8	16.0	5/8	89.0	3 1/2
ME11	Marine Eye 9mm Eye	9.0	N/A	17.8	45/64	15.9	5/8	15.9	5/8	16.0	5/8	115.0	4 1/2
ME12	Marine Eye 10mm Eye	10.0	3/8	17.9	45/64	15.9	5/8	15.9	5/8	16.0	5/8	115.0	4 1/2
ME14	Marine Eye 11mm Eye	11.0	7/16	19.8	25/32	17.5	11/16	17.6	23/32	19.2	3/4	139.0	5 1/2
ME16-3/4	Marine Eye 12mm Eye	12.0	1/2	21.4	27/32	19.1	3/4	20.7	27/32	19.2	3/4	162.0	6 3/8
ME16-7/8	Marine Eye 12mm Eye	12.0	1/2	21.4	27/32	19.1	3/4	20.7	27/32	22.2	7/8	162.0	6 3/8
ME18	Marine Eye 14mm Eye	14.0	9/16	25.0	63/64	22.2	7/8	20.7	27/32	22.2	7/8	175.0	6 7/8
ME20	Marine Eye 16mm Eye	16.0	5/8	28.2	1 7/64	25.4	1	25.4	1	25.4	1	210.0	8 1/4
ME24	Marine Eye 19mm Eye	20.0	3/4	34.5	1 23/64	30.6	1 13/64	31.8	1 1/4	31.7	1 1/4	250.0	9 27/32
ME28	Marine Eye 22mm Eye	22.0	7/8	40.5	1 9/16	36.5	1 7/16	31.8	1 1/4	31.7	1 1/4	285.0	11 7/32
ME32	Marine Eye 25.4mm Eye	25.4	1	46.0	1 13/16	41.3	1 5/8	34.9	1 3/8	34.9	1 3/8	320.0	12 5/8

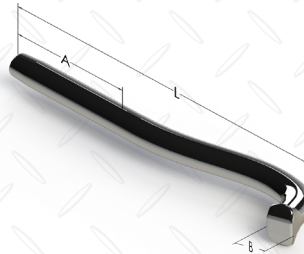
Swage Fittings

Sailmaker Eyes



SKU	Name	Wire Size		ØA		ØB		C-Wire Depth		L	
		mm	Inch	mm	Inch	mm	Inch	mm	Inch	mm	Inch
SE03E	Sailmaker Eyes 2.5mm	2.5	3/32	6.5	1/4	6.5	1/4	32.0	1 1/4	67.5	2 21/32
SE04E	Sailmaker Eyes 3mm	3.0	1/8	6.5	1/4	6.5	1/4	40.0	1 9/16	75.0	2 30/32
SE05E	Sailmaker Eyes 4mm	4.0	5/32	8.0	5/16	6.5	1/4	48.0	1 7/8	87.8	3 15/32
SE06E	Sailmaker Eyes 5mm	5.0	3/16	9.5	3/8	6.5	1/4	59.0	2 5/16	106.0	4 3/16
SE07E	Sailmaker Eyes 5.5mm	5.5	7/32	11.0	7/16	6.5	1/4	64.0	2 1/2	112.0	4 13/32
SE08E	Sailmaker Eyes 6mm	6.0	1/4	12.7	1/2	6.5	1/4	79.0	3 7/64	132.0	5 3/16
SE09E	Sailmaker Eyes 7mm	7.0	9/32	12.7	1/2	6.5	1/4	82.0	3 7/32	140.0	5 1/2
SE10-1/2E	Sailmaker Eyes 8mm (12.7mm)	8.0	5/16	12.7	1/2	6.5	1/4	89.0	3 1/2	151.0	5 30/32
SE10-5/8E	Sailmaker Eyes 8mm (16mm)	8.0	5/16	12.7	1/2	6.5	1/4	89.0	3 1/2	151.0	5 30/32
SE11E	Sailmaker Eyes 9mm	9.0	-	16.0	5/8	6.5	1/4	115.0	4 1/2	N/A	N/A
SE12E	Sailmaker Eyes 10mm	10.0	3/8	N/A	N/A	6.5	1/4	115.0	4 1/2	N/A	N/A

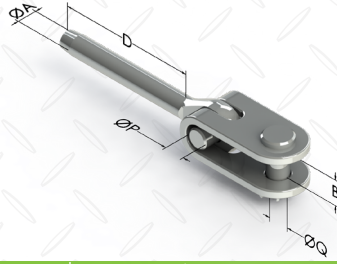
T Swage



SKU	Name	Wire Size		A-Wire Depth		B		L		Reach
		mm	Inch	mm	Inch	mm	Inch	mm	Inch	mm
TSW03	T Swage 2.5mm	2.5	3/32	35.0	1 3/8	6.35	1/4	72.0	2 13/16	6.0
TSW04	T Swage 3mm	3.0	1/8	40.0	1 9/16	6.35	1/4	79.0	3 1/8	6.0
TSW05	T Swage 4mm	4.0	5/32	48.0	1 7/8	9.0	3/8	105.0	4 1/8	8.0
TSW06	T Swage 5mm (Thicker)	5.0	3/16	55.0	2 3/16	9.0	3/8	105.0	4 1/8	11.1
TSW06-O	T Swage 5mm (Thinner)	5.0	3/16	55.0	2 3/16	9.0	3/8	126.0	4 15/16	10.5
TSW07	T Swage 5.5mm	5.5	7/32	64.0	2 1/2	14.2	9/16	121.0	4 3/4	10.0
TSW08	T Swage 6mm	6.0	1/4	72.0	2 13/16	14.2	9/16	132.0	5 5/16	11.0
TSW09	T Swage 7mm	7.0	9/32	76.0	3	14.2	9/16	149.0	5 7/8	12.0
TSW10	T Swage 8mm	8.0	5/16	89.0	3 1/2	18.0	11/16	171.0	6 3/4	19.0
TSW11	T Swage 9mm	9.0	N/A	102.0	4	18.0	11/16	186.0	7 5/16	19.0
TSW12	T Swage 10mm	10.0	3/8	102.0	4	18.0	11/16	186.0	7 5/16	19.0

Swage Fittings

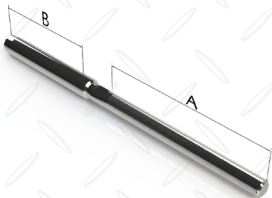
Swage Eye Toggles



SKU	Name	Wire Size		ØA as supplied		ØA after swaging		B		ØC-Pin		D Wire Depth		ØQ Pin	
		mm	Inch	mm	Inch	mm	Inch	mm	Inch	mm	Inch	mm	Inch	mm	Inch
SET04	Swage Eye Toggle, 3mm Swage, 1/4"Pin	3.0	1/8	6.3	1/4	5.6	7/32	4.8	3/16	6.3	1/4	40.0	1 9/16	6.3	1/4
SET05	Swage Eye Toggle, 8mm Swage, 5/16"Pin	8.0	5/16	16.1	5/8	14.3	9/16	12.7	1/2	8.0	5/16	43.0	1 7/8	8.0	5/16
SET06-3/8	Swage Eye Toggle, 5mm Swage, 3/8"Pin	5.0	3/16	9.1	11/32	8.0	5/16	7.7	5/16	9.5	3/8	59.0	2 5/16	9.5	3/8
SET06-5/16	Swage Eye Toggle, 5mm Swage, 5/16"Pin	5.0	3/16	9.1	11/32	8.0	5/16	7.7	5/16	9.5	3/8	59.0	2 5/16	8.0	5/16
SET07-3/8	Swage Eye Toggle, 5.5mm Swage, 3/8"Pin	5.5	7/32	10.8	7/16	9.5	3/8	9.2	3/8	9.5	3/8	64.0	2 1/2	9.5	3/8
SET07-7/16	Swage Eye Toggle, 5.5mm Swage, 7/16"Pin	5.5	7/32	10.8	7/16	9.5	3/8	9.2	3/8	11.0	7/16	64.0	2 1/2	11.0	7/16
SET08-1/2	Swage Eye Toggle, 6mm Swage, 1/2"Pin	6.0	1/4	12.5	1/2	11.1	7/16	9.5	3/8	12.7	1/2	79.0	3 7/64	12.7	1/2
SET08-3/8	Swage Eye Toggle, 6mm Swage, 3/8"Pin	6.0	1/4	12.5	1/2	11.1	7/16	9.5	3/8	12.7	1/2	79.0	3 7/64	9.5	3/8
SET08-7/16	Swage Eye Toggle, 6mm Swage, 7/16"Pin	6.0	1/4	12.5	1/2	11.1	7/16	9.5	3/8	12.7	1/2	79.0	3 7/64	11.0	7/16
SET09	Swage Eye Toggle, 7mm Swage, 1/2"Pin	7.0	9/32	14.3	9/16	12.7	1/2	12.7	1/2	12.7	1/2	82.0	3 7/32	12.7	1/2
SET10-1/2	Swage Eye Toggle, 8mm Swage, 1/2"Pin	8.0	5/16	16.1	5/8	14.3	9/16	12.7	1/2	12.7	1/2	89.0	3 1/2	12.7	1/2
SET10-5/8	Swage Eye Toggle, 8mm Swage, 5/8"Pin	8.0	5/16	16.1	5/8	14.3	9/16	12.7	1/2	16.0	5/8	89.0	3 1/2	16.0	5/8
SET11-5/8	Swage Eye Toggle, 9mm Swage, 5/8"PinH	9.0	11/32	17.8	22/32	15.9	5/8	15.9	5/8	16.0	5/8	115.0	4 1/2	16.0	5/8
SET12-3/4	Swage Eye Toggle, 10mm Swage, 3/4"Pin	10.0	3/8	17.9	45/64	15.9	5/8	15.9	5/8	19.2	3/4	115.0	4 1/2	19.0	3/4
SET12-5/8	Swage Eye Toggle, 10mm Swage, 5/8"Pin	10.0	3/8	17.9	46/64	15.9	5/8	15.9	5/8	16.0	5/8	115.0	4 1/2	16.0	5/8
SET14	Swage Eye Toggle, 11mm Swage, 3/4"Pin	11.0	7/16	19.8	25/32	17.5	22/32	17.6	23/32	19.2	3/4	139.0	5 15/32	19.0	3/4
SET16-3/4	Swage Eye Toggle, 12mm Swage, 3/4"Pin	12.0	1/2	21.4	27/32	19.1	3/4	20.7	27/32	19.2	3/4	165.0	6 1/2	19.0	3/4
SET16-7/8	Swage Eye Toggle, 12mm Swage, 7/8"Pin	12.0	1/2	21.4	27/32	19.1	3/4	20.7	27/32	22.2	7/8	165.0	6 1/2	22.0	7/8
SET18	Swage Eye Toggle, 14mm Swage, 7/8"Pin	14.0	9/16	25.0	1	22.2	7/8	20.7	27/32	22.2	7/8	184.0	7 1/4	22.0	7/8
SET20	Swage Eye Toggle, 16mm Swage, 1"Pin	16.0	5/8	28.2	1 7/64	25.4	1	25.4	1	25.4	1	214.0	8 7/16	25.0	1
SET24	Swage Eye Toggle, 20mm Swage, 1 1/4"Pin	20.0	3/4	34.5	1 11/32	30.6	1 13/64	31.8	1 1/4	31.7	1 1/4	250.0	9 27/32	32.0	1 1/4

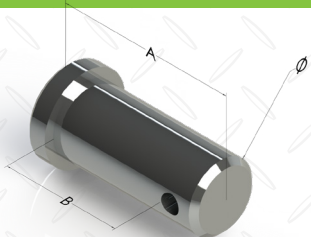
Swage Stud

Standard Series Swage Stud, and Long Series Swag Stud



See Page 16

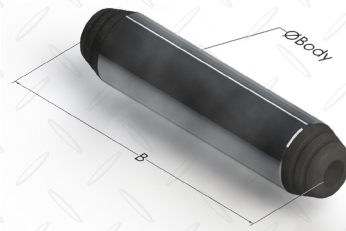
Clevis Pins



See Page 12

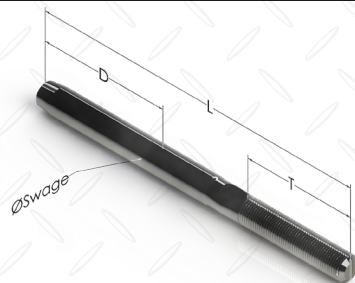
Backstay Insulators

Backstay Insulator Body



SKU	Name	Wire Size		Body Thread	$\varnothing\text{Body}$		B		Break Load	
		mm	Inch	UNF	mm	Inch	mm	Inch	Kg	Lbs
IBINS05	Backstay Insulator Body, 4mm	4.0	5/32	3/8	25.4	1	114.3	4 1/2	1500	3300
IBINS06	Backstay Insulator Body, 5mm	5.0	3/16	3/8	25.4	1	114.3	4 1/2	2750	6050
IBINS07	Backstay Insulator Body, 5.5mm	5.5	7/32	7/16	31.8	1 1/4	152.4	6	3625	7975
IBINS08	Backstay Insulator Body, 6mm	6.0	1/4	1/2	31.8	1 1/4	152.4	6	3625	7975
IBINS09	Backstay Insulator Body, 7mm	7.0	9/32	1/2	37.0	1 1/2	165.1	6 1/2	5450	11990
IBINS10-5/8	Backstay Insulator Body, 8mm	8.0	5/16	5/8	37.0	1 1/2	165.1	6 1/2	9000	19800
IBINS11-3/4	Backstay Insulator Body, 9mm	9.0	3/8	3/4	48.5	1 7/8	177.8	7	11800	25960
IBINS12-3/4	Backstay Insulator Body, 10mm	10.0	3/8	3/4	48.5	1 7/8	177.8	7	11800	25960
IBINS14	Backstay Insulator Body, 11mm	11.0	7/16	3/4	48.5	1 29/32	177.8	7	11800	25960
IBINS16	Backstay Insulator Body, 12mm	12.0	1/2	7/8	63.5	2 1/2	231.8	9 1/8	13600	29920
IBINS18	Backstay Insulator Body, 14mm	14.0	9/16	7/8	63.5	2 1/2	231.8	9 1/8	16500	36300

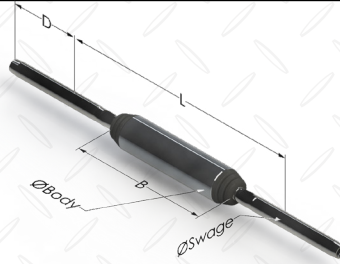
Backstay Insulator Swage Stud



SKU	Name	Wire Size		Body Thread	T		L		$\varnothing\text{Swage}$		Wire Depth D	
		mm	Inch	UNF	mm	Inch	mm	Inch	mm	Inch	mm	Inch
ISS05	Backstay Insulator Swage Stud, 4mm, 3/8 Thread	4.0	5/32	3/8	45.0	1 3/4	114.0	4 1/2	7.6	15/16	48.0	1 7/8
ISS06	Backstay Insulator Swage Stud, 5mm, 3/8 Thread	5.0	3/16	3/8	45.0	1 3/4	114.0	4 1/2	9.1	13/16	59.0	2 5/16
ISS07	Backstay Insulator Swage Stud, 5.5mm, 7/16 Thread	5.5	7/32	7/16	62.0	2 7/16	154.0	6 1/16	10.9	7/16	60.0	2 3/8
ISS08	Backstay Insulator Swage Stud, 6mm, 1/2 Thread	6.0	1/4	1/2	62.0	2 7/16	154.0	6 1/16	12.7	1/2	75.0	3
ISS09	Backstay Insulator Swage Stud, 7mm, 1/2 Thread	7.0	9/32	1/2	62.0	2 7/16	176.2	6 15/16	14.2	9/16	82.0	3 1/4
ISS10-5/8	Backstay Insulator Swage Stud, 8mm, 5/8 Thread	8.0	5/16	5/8	67.0	2 5/8	190.0	7 1/2	16.1	5/8	89.0	3 1/2
ISS11-3/4	Backstay Insulator Swage Stud, 9mm, 3/4 Thread	9.0	3/8	3/4	73.0	2 15/16	224.0	8 7/8	18.0	3/4	114.0	4 1/2
ISS12-3/4	Backstay Insulator Swage Stud, 10mm, 3/4 Thread	10.0	3/8	3/4	73.0	2 15/16	224.0	8 7/8	18.0	3/4	114.0	4 1/2
ISS14	Backstay Insulator Swage Stud, 11mm, 3/4 Thread	11.0	7/16	3/4	73.0	2 15/16	243.0	9 9/16	19.9	13/16	139.0	5 1/2
ISS16	Backstay Insulator Swage Stud, 12mm, 7/8 Thread	12.0	1/2	7/8	98.4	3 7/8	292.0	11 1/2	21.5	7/8	162.0	6 3/8
ISS18	Backstay Insulator Swage Stud, 14mm, 7/8 Thread	14.0	9/16	7/8	98.4	3 7/8	308.0	12 1/8	25.0	1	178.0	7

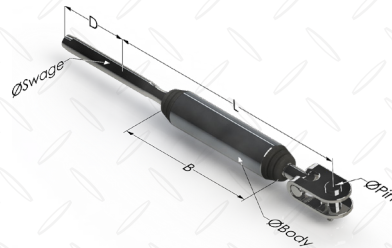
Backstay Insulators

Backstay Insulators, Stud-Stud



SKU	Name	Wire Size		Body Thread	B		D Wire Depth		L		Ø Body		Break Load
		mm	Inch	UNF	mm	Inch	mm	Inch	mm	Inch	mm	Inch	lbs
INS05	Backstay Insulator, Stud-Stud, 4mm	4.0	5/32	5/16	25.4	1	48.0	1 7/8	164.0	6 7/16	25.4	1	1500
INS06	Backstay Insulator, Stud-Stud, 5mm	5.0	3/16	3/8	25.4	1	59.0	2 5/16	164.0	6 7/16	25.4	1	2750
INS07	Backstay Insulator, Stud-Stud, 5.5mm	5.5	7/32	1/2	31.8	1 1/4	64.0	2 3/8	216.0	8 1/2	31.8	1 1/4	3625
INS08	Backstay Insulator, Stud-Stud, 6mm	6.0	1/4	1/2	31.8	1 1/4	75.0	3	216.0	8 1/2	31.8	1 1/4	3625
INS09	Backstay Insulator, Stud-Stud, 7mm	7.0	9/32	1/2	37.0	1 1/2	82.0	3 1/4	226.0	9	37.0	1 7/8	5450
INS10-5/8	Backstay Insulator, Stud-Stud, 8mm	8.0	5/16	5/8	37.0	1 1/2	89.0	3 1/2	226.0	9	37.0	1 7/8	9000
INS11-3/4	Backstay Insulator, Stud-Stud, 9mm	9.0	N/A	3/4	48.5	2	114.0	4 1/2	240.0	9 7/16	48.5	2	11800
INS12-3/4	Backstay Insulator, Stud-Stud, 10mm	10.0	3/8	3/4	48.5	2	114.0	4 1/2	240.0	9 7/16	48.5	2	11800
INS14	Backstay Insulator, Stud-Stud, 11mm	11.0	7/16	3/4	48.5	2	139.0	5 1/2	240.0	9 7/16	48.5	2	11800
INS16	Backstay Insulator, Stud-Stud, 12mm	12.0	1/2	7/8	63.5	2 1/2	162.0	6 3/8	302.0	11 7/8	63.5	2 1/2	13600
INS18	Backstay Insulator, Stud-Stud, 14mm	14.0	9/16	7/8	63.5	2 1/2	178.0	7	302.0	11 7/8	63.5	2 1/2	16500

Backstay Insulators, Toggle-Stud



SKU	Name	Wire Size		Body Thread	ØPin		ØBody		ØSwage		L		D		B		Break Load
		mm	Inch	UNF	mm	Inch	mm	Inch	mm	Inch	mm	Inch	mm	Inch	mm	Inch	lbs
INSTS05	Backstay Insulator Toggle-Stud, 4mm	4.0	5/32	5/16	8.0	5/16	25.4	1	7.6	5/16	194.0	7 5/8	44.5	1 3/4	114.3	4 1/2	3300
INSTS06	Backstay Insulator Toggle-Stud, 5mm	5.0	3/16	3/8	9.5	3/8	25.4	1	9.1	23/64	210.0	8 1/4	47.0	1 27/32	114.3	4 1/2	6050
INSTS07	Backstay Insulator Toggle-Stud, 5.5mm	5.5	7/32	1/2	11.0	7/16	31.8	1 1/4	10.9	7/16	220.0	8 11/16	64.0	2 17/32	152.4	6	7975
INSTS08	Backstay Insulator Toggle-Stud, 6mm	6.0	1/4	1/2	12.7	1/2	31.8	1 1/4	12.6	1/2	274.0	10 13/16	75.0	3	152.4	6	7975
INSTS09	Backstay Insulator Toggle-Stud, 7mm	7.0	9/32	1/2	12.7	1/2	37.0	1 1/2	14.2	9/16	274.0	10 13/16	82.0	3 7/32	165.0	6 1/2	11990
INSTS10	Backstay Insulator Toggle-Stud, 8mm	8.0	5/16	5/8	16.0	5/8	37.0	1 1/2	16.1	5/8	294.0	11 9/16	89.0	3 1/2	165.0	6 1/2	9000
INSTS11	Backstay Insulator Toggle-Stud, 9mm	9.0	N/A	3/4	19.0	3/4	48.5	1 15/16	18.0	3/4	348.0	13 3/4	114.0	4 1/2	178.0	7	11800
INSTS12	Backstay Insulator Toggle-Stud, 10mm	10.0	3/8	3/4	19.0	3/4	48.5	1 15/16	18.0	3/4	348.0	13 3/4	114.0	4 1/2	178.0	7	11800
INSTS14	Backstay Insulator Toggle-Stud, 11mm	11.0	7/16	3/4	19.2	3/4	48.5	1 15/16	19.9	3/4	344.0	13 1/2	139.0	5 15/32	177.8	7	25960
INSTS16	Backstay Insulator Toggle-Stud, 12mm	12.0	1/2	7/8	22.2	7/8	48.5	1 15/16	21.5	7/8	420.0	16 1/2	162.0	6 3/8	231.8	9 1/8	29920
INSTS18	Backstay Insulator Toggle-Stud, 14mm	14.0	9/16	7/8	22.2	7/8	48.5	1 15/16	25.0	1	420.0	16 1/2	178.0	7	231.8	9 1/8	36300

The Backstay Insulators also come in Toggle/Toggle and Eye/Eye.

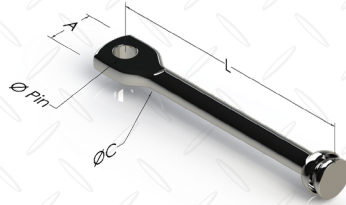
Mast Fittings

Backing Plates



SKU	Name	For use with	A		B	
			mm	Inch	mm	Inch
BP3/4	Backing Plates 2.5mm/3mm	TSW03 or TSW04 or TRB04 or TTS04	7.0	9/32	11.9	15/32
BP5/60	Backing Plates 4mm/5mm	TSW05 or TRB05 or TTS05	9.5	3/8	26.0	11/32
BP6	Backing Plates 5mm	TSW06 or TRB06 or TTS06	11.0	7/16	23.0	29/32
BP7/8/9	Backing Plates 6mm/7mm	TSW07 or TRB07 or TTS07 or TSW08 or TRB08 or TTS08 or TSW09 or TRB09 or TTS09	15.0	19/32	33.2	15/16
BP10/12	Backing Plates 8mm/10mm	TSW10 TSW12 or TTS12	19.0	3/4	41.0	15/8

Stem Ball Eyes



SKU	Name	Wire Size		ØPin		L		A		ØC		Stem Ball Cup
		mm	Inch	mm	Inch	mm	Inch	mm	Inch	mm	Inch	
SBE08-1/2	Stem Ball Eye 6mm For 1/2" Pin	6.0	1/4	12.7	1/2	122.0	4 3/4	21.0	13/16	12.7	1/2	26 x 16
SBE08-3/8	Stem Ball Eye 6mm For 3/8" Pin	6.0	1/4	9.5	3/8	122.0	4 3/4	21.0	13/16	12.7	1/2	26 x 16
SBE10-1/2	Stem Ball Eye 8mm For 1/2" Pin	8.0	5/16	12.7	1/2	138.0	5 1/2	28.5	1 1/8	14.3	9/16	34 x 20
SBE10-5/8	Stem Ball Eye 8mm For 5/8" Pin	8.0	5/16	16.0	5/8	138.0	5 1/2	32.0	1 1/4	16.4	21/32	34 x 20

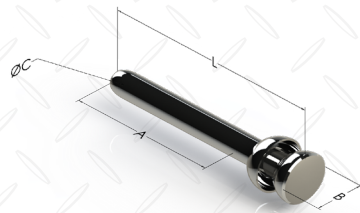
Mast Fittings

Cup Washers



SKU	Name	øA		øB		Use with
		mm	Inch	mm	Inch	Series
CW3/4	Stem Ball Cup 1/8"	6.9	9/32	17.0	11/16	SB03 or SB04
CW5	Stem Ball Cup 5/32"	11.0	7/16	26.0	1 1/32	SB05
CW6	Stem Ball Cup 3/16"	13.0	1/2	26.0	1 1/32	SB06
CW7/8/9/10-1/2	Stem Ball cup 5/16"	16.0	5/8	26.0	1 1/32	SB07 or SB08 or SB09 SB10-1/2
CW10-5/8/12	Stem Ball Cup 3/8"	20.0	3/4	34.0	1 11/32	SB10-5/8 or SB11 or SB12
CW14	Stem Ball Cup 7/16"	21.0	15/16	34.0	1 11/32	SB14
CW16	Stem Ball Cup 1/2"	22.0	7/8	34.0	1 11/32	SB16

Stem Ball Swages



SKU	Name	Wire Size		Appropriate Stem Ball Cup mm x mm	A-Wire Depth		B		øC		L	
		mm	Inch		mm	Inch	mm	Inch	mm	Inch	mm	Inch
SB03	Stemball Swages 2.5mm	2.5	3/32	17X6.9	32.0	1 1/4	12.5	1/2	6.4	1/4	61.0	2 13/32
SB04	Stemball Swages 3mm	3.0	1/8	17X6.9	40.0	1 9/16	12.5	1/2	6.4	1/4	61.0	2 13/32
SB05	Stemball Swages 4mm	4.0	5/32	26X11	48.0	1 7/8	15.0	19/32	7.6	5/16	79.0	3 1/8
SB06	Stemball Swages 5mm	5.0	3/16	26X13	52.0	2 1/32	20.0	25/32	9.1	3/8	86.0	3 25/32
SB07	Stemball Swages 5.5mm	5.5	7/32	26X16	54.0	2 1/8	21.5	27/32	10.9	7/16	90.0	3 35/64
SB08	Stemball Swages 6mm	6.0	1/4	26X 16	64.0	2 1/2	21.5	27/32	12.7	1/2	92.0	3 5/8
SB09	Stemball Swages 7mm	7.0	9/32	26X16	75.0	3	21.5	27/32	14.2	9/16	98.0	3 55/64
SB10-1/2	Stemball Swages 8mm with Smaller Head	8.0	5/16	26X16	89.0	3 1/2	21.5	27/32	16.2	5/8	125.0	5
SB10-5/8	Stemball Swages 8mm with Larger Head	8.0	5/16	34X20	89.0	3 1/2	29.0	1 1/8	16.2	5/8	125.0	5
SB11	Stemball Swages 9mm	9.0	N/A	34X20	102.0	4	29.0	1 1/8	18.0	23/32	148.0	5 13/16
SB12	Stemball Swages 10mm	10.0	3/8	34X20	102.0	4	29.0	1 1/8	18.0	23/32	148.0	5 13/16
SB14	Stemball Swages 11mm	11.0	7/16	34X21	122.0	4 13/16	29.0	1 1/8	19.8	25/32	174.0	6 7/8
SB16	Stemball Swages 12mm	12.0	1/2	34X22	140.0	5 1/2	29.0	1 1/8	21.4	27/32	193.0	7 5/8

Mast Fittings

T/Bar Running Backstay



SKU	Name	Wire Size		ØA		ØB	
		mm	Inch	mm	Inch	mm	Inch
TRB4	T/Bar Running Backstays 3mm	2.5-30	3/32 - 1/8	13.2	17/32	4.7	3/16
TRB5	T/Bar Running Backstays 4mm	4.0	5/32	13.2	17/32	6.4	1/4
TRB6	T/Bar Running Backstays 5mm	5.0	13/64	16.3	5/8	6.5	1/4
TRB7/8/9	T/Bar Running Backstays 6-7mm	5.5-7.0	7/32 - 9/32	22.1	7/8	7.9	5/16
TRB10/12	T/Bar Running Backstays 8-10mm	8.0- 10.0	5/16 - 3/8	29.7	1 3/16	9.5	3/8

Threaded Stemballs

Please advise: Left Hand-L or Right Hand-R



SKU	Name	Body Thread		A	T.P.I
		UNF	mm	Inch	UNF
TSB04-1/4	Threaded Stemballs, 1/4" Thread	1/4	56.0	2 13/64	28.0
TSB05-5/16	Threaded Stemballs, 5/16" Thread	5/16	61.0	2 13/32	24.0
TSB06-3/8	Threaded Stemballs, 3/8" Thread	3/8	70.0	2 3/4	24.0
TSB06-5/16	Threaded Stemballs, 5/16" Thread	5/16	70.0	2 3/4	24.0
TSB07-7/16	Threaded Stemballs, 7/16" Thread	7/16	75.0	2 30/32	20.0
TSB08-1/2	Threaded Stemballs, 1/2" Thread	1/2	80.0	3 5/32	20.0
TSB10-1/2	Threaded Stemballs, 1/2" Thread	1/2	96.0	3 25/32	18.0
TSB12-5/8	Threaded Stemballs, 5/8" Thread	5/8	96.0	3 25/32	18.0
TSB14-3/4	Threaded Stemballs, 3/4" Thread	3/4	125.0	4 7/8	16.0
TSB16-3/4	Threaded Stemballs, 3/4" Thread	3/4	125.0	4 7/8	16.0

Mast Fittings

Threaded T Swage

Please advise: Left Hand-L or Right Hand-R



SKU	Name	A		Body Thread
		mm	Inch	UNF
TTS04-1/4	Threaded T Swage 3mm, 1/4" Thread	56.0	2 13/64	1/4
TTS05-5/16	Threaded T Swage 4mm, 5/16" Thread	61.0	2 13/32	5/16
TTS06-3/8	Threaded T Swage 5mm, 3/8" Thread	70.0	2 3/4	3/8
TTS06-5/16	Threaded T Swage 5mm, 5/16" Thread	61.0	2 13/32	5/16
TTS07-7/16	Threaded T Swage 5.5mm, 7/16" Thread	75.0	2 30/32	7/16
TTS08-1/2	Threaded T Swage 6mm, 1/2" Thread	80.0	3 5/32	1/2
TTS10-1/2	Threaded T Swage 8mm, 1/2" Thread	80.0	3 5/32	1/2
TTS12-5/8	Threaded T Swage 10mm, 5/8" Thread	96.0	3 3/4	5/8

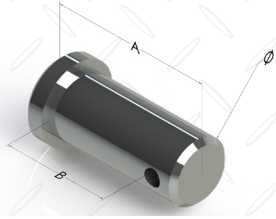
T Swage



See page 23

Lifeline Fittings

Clevis Pins



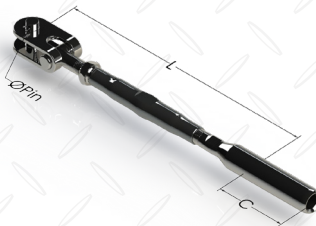
See Page 12

Lifeline Closed Turnbuckle, Smoothline Fork-Stud



SKU	Name	Wire Size		Body Thread	W		ØPin		L		C-Wire Depth	
		mm	Inch	UNF	mm	Inch	mm	Inch	mm	Inch	mm	Inch
CBSLF04-1/4	Lifeline Closed Turnbuckle, Smoothline Fork-Stud 1/4", 3mm Stud	3.0	1/8	1/4	8.0	5/16	6.5	1/4	96.0	3 25/32	32.0	1 1/4
CBSLF04-5/16	Lifeline Closed Turnbuckle, Smoothline Fork-Stud 5/16", 3mm Stud	3.0	1/8	5/16	8.0	5/16	6.5	1/4	96.0	3 25/32	32.0	1 1/4
CBSLF05-1/4	Lifeline Closed Turnbuckle, Smoothline Fork-Stud 1/4", 4mm Stud	4.0	5/32	1/4	8.0	5/16	6.5	1/4	100.0	3 15/16	32.0	1 1/4
CBSLF05-5/16	Lifeline Closed Turnbuckle, Smoothline Fork-Stud 5/16", 4mm Stud	4.0	5/32	1/4	8.0	5/16	6.5	1/4	108.0	4 1/4	32.0	1 1/4
CBSLF06-1/4	Lifeline Closed Turnbuckle, Smoothline Fork-Stud 1/4", 5mm Stud	5.0	3/16	5/16	8.0	5/16	6.5	1/4	100.0	3 15/16	32.0	1 1/4
CBSLF06-5/16	Lifeline Closed Turnbuckle, Smoothline Fork-Stud 5/16", 5mm Stud	5.0	3/16	5/16	8.0	5/16	6.5	1/4	108.0	4 1/4	32.0	1 1/4

Lifeline Closed Turnbuckle, Toggle-Stud



SKU	Name	Wire Size		Body Thread	W		Thread Length		C Wire Depth		ØPin		L
		mm	Inch	UNF	mm	Inch	mm	Inch	mm	Inch	mm	Inch	mm
CBLTS04-1/4	Lifeline Closed Turnbuckle, Toggle-Stud, 1/8" Wire, 1/4" Thread	3.0	1/8	1/4	7.5	9/32	56.0	2 13/64	32.0	1 1/4	6.4	1/4	158.0
CBLTS05-1/4	Lifeline Closed Turnbuckle, Toggle-Stud, 5/32" Wire, 1/4" Thread	4.0	5/32	1/4	7.5	9/32	56.0	2 13/64	32.0	1 1/4	6.4	1/4	158.0
CBLTS06-1/4	Lifeline Closed Turnbuckle, Toggle-Stud, 3/16" Wire, 1/4" Thread	5.0	3/16	1/4	7.5	9/32	56.0	2 13/64	32.0	1 1/4	6.4	1/4	158.0

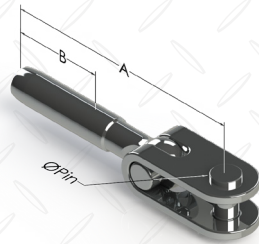
Lifeline Fittings

Lifeline Open Turnbuckle, Toggle-Stud



SKU	Name	Wire Size		Body Thread	L		ØPin		C-Wire Depth	
		mm	Inch	UNF	mm	Inch	mm	Inch	mm	Inch
LTS04-1/4	Lifeline Open Turnbuckle, Toggle-Swage, 1/4", 3mm Stud	3.0	1/8	1/4	96.0	3 25/32	6.4	1/4	32.0	1 1/4
LTS04-5/16	Lifeline Open Turnbuckle, Toggle-Swage, 5/16", 3mm Stud	3.0	1/8	5/16	96.0	3 25/32	8.0	5/16	32.0	1 1/4
LTS05-1/4	Lifeline Open Turnbuckle, Toggle-Swage, 1/4", 4mm Stud	4.0	5/32	1/4	100.0	3 15/16	6.4	1/4	32.0	1 1/4
LTS05-5/16	Lifeline Open Turnbuckle, Toggle-Swage, 5/16", 4mm Stud	4.0	5/32	5/16	108.0	4 1/4	8.0	5/16	32.0	1 1/4
LTS06-1/4	Lifeline Open Turnbuckle, Toggle-Swage, 1/4", 5mm Stud	5.0	3/16	1/4	100.0	3 15/16	6.4	1/4	32.0	1 1/4
LTS06-5/16	Lifeline Open Turnbuckle, Toggle-Swage, 5/16" 5mm Stud	5.0	3/16	5/16	108.0	4 1/4	8.0	5/16	32.0	1 1/4

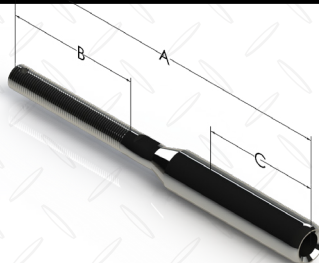
Lifeline Swage Eye Toggles



SKU	Name	Wire Size		A		B		ØPin	
		mm	Inch	mm	Inch	mm	Inch	mm	Inch
LSET04-1/4	Lifeline Swage Eye Toggle 3mm With 1/4" Pin	3.0	1/8	71.0	2 25/32	32.0	1 1/4	6.4	1/4
LSET05-1/4	Lifeline Swage Eye Toggle 4mm With 1/4" Pin	4.0	5/32	71.0	2 25/32	32.0	1 1/4	6.4	1/4
LSET06-1/4	Lifeline Swage Eye Toggle 5mm With 1/4" Pin	5.0	3/16	71.0	2 25/32	32.0	1 1/4	6.4	1/4

Lifeline Swage Stud

Please advise: Left Hand-L or Right Hand-R



SKU	Name	Wire Size		Body Thread	A		B		C-Wire Depth	
		mm	Inch	UNF	mm	Inch	mm	Inch	mm	Inch
LSS04-1/4	Lifeline Swage Stud, 3mm, 1/4" Thread	3.0	1/8	1/4	96.0	3 25/32	61.0	2 13/32	32.0	1 1/4"
LSS05-1/4	Lifeline Swage Stud, 4mm, 1/4" Thread	4.0	5/32	1/4	100.0	3 15/16	56.0	2 13/64	32.0	1 1/4"
LSS06-1/4	Lifeline Swage Stud, 5mm, 1/4" Thread	5.0	3/16	1/4	100.0	3 15/16	56.0	2 13/64	32.0	1 1/4"
LSS06-5/16	Lifeline Swage Stud, 5mm, 5/16" Thread	5.0	3/16	5/16	108.0	4 1/4	61.0	2 13/32	32.0	1 1/4"

Lifeline Fittings

Pelican Hooks



SKU	Name	Wire Size		Body Thread	Tensile Strength (when fully closed)
		mm	Inch	UNF	Kgs
SPH0010	Pelican Hook, No Stud	N/A	N/A	5/16	600
SPH0410	Pelican Hook, 3mm Stud	3.0	1/8	5/16	600
SPH0510	Pelican Hook, 4mm Stud	4.0	5/32	5/16	600
SPH0610	Pelican Hook, 5mm Stud	5.0	3/16	5/16	600

Smoothline Fork Swages



SKU	Name	Wire Size		A		ØPin	
		mm	Inch	mm	Inch	mm	Inch
SLF04	Smooth Line Fork Swage 3mm	3.0	1/8	8.0	5/16	6.5	1/4
SLF05	Smooth Line Fork Swage 4mm	4.0	5/32	8.0	5/16	6.5	1/4
SLF06	Smooth Line Fork Swage 5mm	5.0	3/16	8.0	5/16	6.5	1/4

Threaded Smoothline Forks

Please advise: Left Hand-L or Right Hand-R



SKU	Name	Wire Size		A		ØPin	
		mm	Inch	mm	Inch	mm	Inch
SLTF08	Threaded Smoothline Fork 1/4"	8.0	5/16	6.5	1/4	6.5	1/4
SLTF10	Threaded Smoothline Fork 5/16"	8.0	5/16	6.5	1/4	6.5	1/4

Lifeline Fittings

Swivel Gate Eyes



Gate Eye Swivel D with Stud

SKU	Name	Wire Size	
		mm	Inch
SGES04	Gate Eye Swivel D with Stud, 1/8" (3mm) Wire	3.0	1/8
SGES05	Gate Eye Swivel D with Stud, 5/32" (4mm) Wire	4.0	5/32
SGES06	Gate Eye Swivel D with Stud, 3/16" (5mm) Wire	5.0	3/16



Gate Eye Swivel D

SKU	Name	Wire Size	
		mm	Inch
SGES-D	Swivel Gate Eye, Single		



Gate Eye Stud

SKU	Name	Wire Size	
		mm	Inch
GESS04	Gate Eye Swivel Stud, 1/8" (3mm) Wire	3.0	1/8
GESS05	Gate Eye Swivel Stud, 5/32" (4mm) Wire	4.0	5/32
GESS06	Gate Eye Swivel Stud, 3/16" (5mm) Wire	5.0	3/16



Gate Eye Swivel Double D with Stud

SKU	Name	Wire Size	
		mm	Inch
DGES04	Gate Eye Swivel Double D with Stud, 1/8" (3mm) Wire	3.0	1/8
DGES05	Gate Eye Swivel Double D with Stud, 5/32" (4mm) Wire	4.0	5/32
DGES06	Gate Eye Swivel Double D with Stud, 3/16" (5mm) Wire	5.0	3/16



Gate Eye Swivel Double D

SKU	Name	Wire Size	
		mm	Inch
DGES-D	Gate Eye Swivel Double D		



Lifeline Fittings

Threaded Gate Eyes

Please advise: Left Hand-L or Right Hand-R



Gate Eye Threaded D with Stud

SKU	Name	Wire Size		Body Thread
		mm	Inch	UNF
SGET0410	Gate Eye Threaded D with Stud, 1/8" (3mm) Wire	3.0	1/8	5/16
SGET0510	Gate Eye Threaded D with Stud, 5/32" (4mm) Wire	4.0	5/32	5/16
SGET0610	Gate Eye Threaded D with Stud, 3/16" (5mm) Wire	5.0	3/16	5/16
SGET0810	Gate Eye Threaded D with Stud, 1/4" (6mm) Wire	6.0	1/4	3/8

GATE EYE THREADED D WITH STUD



Gate Eye Threaded D

SKU	Name	Wire Size		Body Thread
		mm	Inch	UNF
SGET0010	Gate Eye Threaded D, 5/16" Thread	-	-	5/16
SGET0012	Gate Eye Threaded D, 3/8" Thread	-	-	3/8

GATE EYE THREADED D



Gate Eye Threaded Stud

SKU	Name	Wire Size		Body Thread
		mm	Inch	UNF
GETS0510	Gate Eye Threaded Stud, 5/32" (4mm) Wire	4.0	5/32	5/16
GETS0610	Gate Eye Threaded Stud, 3/16" (5mm) Wire	5.0	3/16	5/16
GETS0810	Gate Eye Threaded Stud, 1/4" (6mm) Wire	6.0	1/4	3/8

GATE EYE THREADED STUD



Gate Eye Threaded Double D with Stud

SKU	Name	Wire Size		Body Thread
		mm	Inch	UNF
DGET0410	Gate Eye Threaded Double D with Stud, 1/8" (3mm) Wire	3.0	1/8	5/16
DGET0510	Gate Eye Threaded Double D with Stud, 5/32" (4mm) Wire	4.0	5/32	5/16
DGET0610	Gate Eye Threaded Double D with Stud, 3/16" (5mm) Wire	5.0	3/16	5/16
DGET0810	Gate Eye Threaded Double D with Stud, 1/4" (6mm) Wire	6.0	1/4	3/8

GATE EYE THREADED DOUBLE D WITH STUD



Gate Eye Threaded Double D

SKU	Name	Wire Size		Body Thread
		mm	Inch	UNF
DGET0010	Gate Eye Threaded Double D, 5/16" Thread	-	-	5/16
DGET0012	Gate Eye Threaded Double D, 3/8" Thread	-	-	3/8

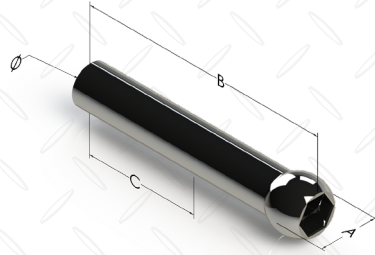
GATE EYE THREADED DOUBLE D



Architectural Fittings

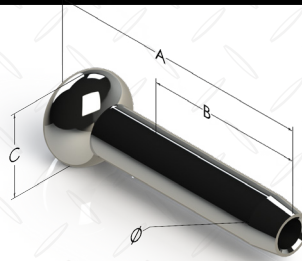
Allen Head Adjustor

Please advise: Left Hand-L or Right Hand-R



		Body	B		A		C		Ø Swage	
SKU	Name	UNF	mm	Inch	mm	Inch	mm	Inch	mm	Inch
AHA-1/4RH	Allen Head Adjustor, 1/4" Thread, Round	1/4	50.0	1 31/32	12.7	1/2	15.0	19/32	9.0	3/8
AHA-1/4RH	Allen Head Adjustor, 1/4" Thread, Flat	1/4	44.0	1 23/32	12.7	1/2	15.0	19/32	7.9	5/16

Allen Head Swage



		Wire Size		A		B		C		Ø	
SKU	Name	mm	Inch	mm	Inch	mm	Inch	mm	Inch	mm	Inch
AHS04	Allen Head Swage, 3mm / Short	3.0	1/8	35.0	1 3/8	27.0	1 1/16	9.5	3/8	6.4	1/4
AHS05	Allen Head Swage, 4mm	4.0	5/32	50.0	1 31/32	39.0	1 17/32	12.7	1/2	7.5	5/16
AHS06	Allen Head Swage, 5mm	5.0	3/16	50.0	1 31/32	39.0	1 17/32	12.7	1/2	8.8	3/8

Allen Head Adjuster with Stud

Head: Flat-F or Round-R



		Wire Size		Body Thread
SKU	Name	mm	Inch	UNF
AHASS04	Allen Head Adjuster with Stud	3.0	1/8	1/4
AHASS05	Allen Head Adjuster with Stud	4.0	5/32	1/4
AHASS06	Allen Head Adjuster with Stud	5.0	3/16	1/4

Architectural Fittings

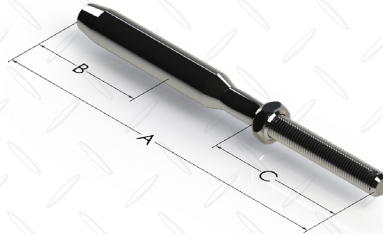
Architectural Closed Body



SKU	Name	A		Ø		Body Thread
		mm	Inch	mm	Inch	UNF
ACB08	Architectural Body 1/4"	65.0	2 9/16	10.0	3/8	1/4

Architectural Swage Stud

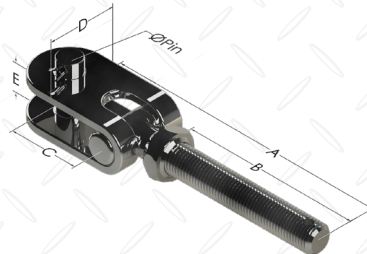
Nut not supplied



SKU	Name	Wire Size		Body Thread	A		B		C-Wire Depth	
		mm	Inch	UNF	mm	Inch	mm	Inch	mm	Inch
ASS04-1/4	Architectural Swage Stud 3mm Stud With 1/4"	3.0	1/8	1/4	76.0	3	32.0	1 1/4	36.0	1 13/32
ASS05-1/4	Architectural Swage Stud 4mm Stud With 1/4"	4.0	5/32	1/4	76.0	3	32.0	1 1/4	36.0	1 13/32
ASS06-1/4	Architectural Swage Stud 5mm Stud With 1/4"	5.0	3/16	1/4	76.0	3	32.0	1 1/4	36.0	1 13/32

Architectural T-bolt Toggle & Nut

Please advise: Left Hand-L or Right Hand-R

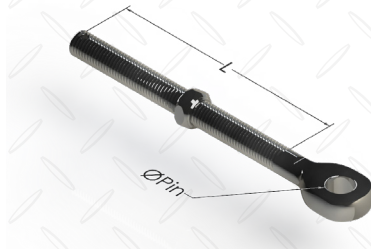


SKU	Name	Body Thread	ØPin		A		B (Thread Length)		C		D		E	
		UNF	mm	Inch	mm	Inch	mm	Inch	mm	Inch	mm	Inch	mm	Inch
ATBT0808	Architectural T-bolt Toggle & Nut	1/4	6.4	1/4	72.0	2 27/32	38.0	1 1/2	16.0	5/8	16.0	5/8	7.9	5/16

Architectural Fittings

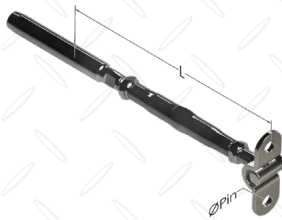
Architectural Threaded Eye

Please advise: Left Hand-L or Right Hand-R



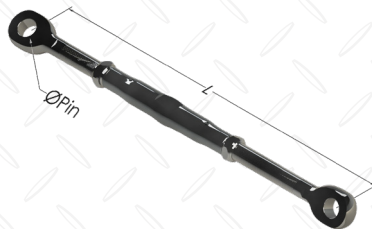
SKU	Name	Body		TPI Thread		L		ØPin	
		UNF	mm	mm	Inch	mm	Inch		
ATE08	Architectural Threaded Eye	1/4	28.0	38.0	1 1/2	6.4	1/4		

Architectural Turnbuckle, Deck Toggle-Stud



SKU	Name	Wire		Body Thread	L Open		L Close		ØPin		Break Load	
		mm	Inch		mm	Inch	mm	Inch	mm	Inch	Kgs	lbs
ACBDT04	Architectural Turnbuckle, Deck Toggle-Stud, 1/8" Wire	3.0	1/8	1/4	153.0	6 1/32	118.0	4 21/32	6.4	1/4	1500	3300
ACBDT05	Architectural Turnbuckle, Deck Toggle-Stud, 5/32" Wire	4.0	5/32	1/4	153.0	6 1/32	118.0	4 21/32	6.4	1/4	1500	3300
ACBDT06	Architectural Turnbuckle, Deck Toggle-Stud, 3/16" Wire	5.0	3/16	1/4	153.0	6 1/32	118.0	4 21/32	6.4	1/4	1500	3300

Architectural Turnbuckle, Eye-Eye



SKU	Name	Wire		Body Thread	L Open		L Close		ØPin		Break Load	
		mm	Inch		mm	Inch	mm	Inch	mm	Inch	Kgs	lbs
ACBEE08	Architectural Turnbuckle, Eye-Eye, 1/8" Wire	3.0	1/8	1/4	150.0	5 29/32	110.0	4 5/16	6.4	1/4	1500	3300

Architectural Fittings

Architectural Turnbuckle, Smoothline Fork-Stud



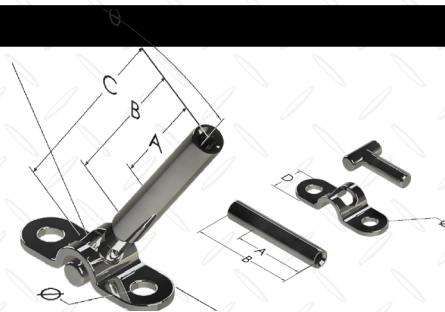
SKU	Name	Wire		Body Thread	L Open		L Close		$\varnothing Pin$		Break Load	
		mm	Inch	UNF	mm	Inch	mm	Inch	mm	Inch	Kgs	lbs
ACBSLF04	Architectural Turnbuckle, Smoothline Fork-Stud 1/8" Wire	3.0	1/8	1/4	163.0	6 13/32	118.0	4 21/32	6.4	1/4	1500	3300
ACBSLF05	Architectural Turnbuckle, Smoothline Fork-Stud, 5/32" Wire	4.0	5/32	1/4	163.0	6 13/32	118.0	4 21/32	6.4	1/4	1500	3300
ACBSLF06	Architectural Turnbuckle, Smoothline Fork-Stud, 3/16" Wire	5.0	3/16	1/4	163.0	6 13/32	118.0	4 21/32	6.4	1/4	1500	3300

Architectural Turnbuckle, Toggle-Stud



SKU	Name	Wire Size		Body	L Open Thread		L Closed		A		B		C		$\varnothing Pin$	
		mm	Inch	UNF	mm	Inch	mm	Inch	mm	Inch	mm	Inch	mm	Inch	mm	Inch
ACB04-1/4	Architectural T-bolt Toggle, 1/8" Wire	3.0	1/8	1/4	155.0	6 3/32	113.0	4 7/16	76.0	2 63/64	32.0	1 1/4	36.0	1 13/32	6.3	1/4
ACB05-1/4	Architectural T-bolt Toggle, 5/32" Wire	4.0	5/32	1/4	155.0	6 3/32	113.0	4 7/16	76.0	2 63/64	32.0	1 1/4	36.0	1 13/32	6.3	1/4
ACB06-1/4	Architectural T-bolt Toggle, 5/32" Wire	5.0	3/16	1/4	155.0	6 3/32	113.0	4 7/16	76.0	2 63/64	32.0	1 1/4	36.0	1 13/32	6.3	1/4

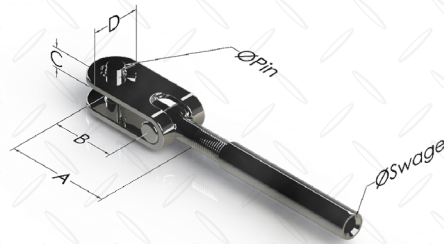
Deck Toggle & Threaded Swage



SKU	Name	Wire Size		O	A		B		C		D		Swage Diameter	
		mm	Inch	UNF	mm	Inch	mm	Inch	mm	Inch	mm	Inch	mm	Inch
DTBTS04	Deck Toggle & Swage 3mm	3.0	1/8	145.0	32.0	1 1/4	50.0	1 31/32	72.0	2 27/32	16.0	5/8	6.4	1/4
DTBTS05	Deck Toggle & Swage 4mm	4.0	5/32	145.0	32.0	1 1/4	50.0	1 31/32	72.0	2 27/32	16.0	5/8	7.5	5/16
DTBTS06	Deck Toggle & Swage 5mm	5.0	3/16	145.0	32.0	1 1/4	50.0	1 31/32	72.0	2 27/32	16.0	5/8	9.1	3/8

Architectural Fittings

Toggle Bar Threaded Swages



SKU	Name	Wire Size		ØPin		Body Thread	A		B		C		D		ØSwage	
		mm	Inch	mm	Inch		mm	Inch	mm	Inch	mm	Inch	mm	Inch	mm	Inch
TBTS04	Toggle Bar Threaded Swage 3mm	310	1/8	6.5	1/4	1/4	34.0	1 11/32	16.0	5/8	7.5	9/32	16.0	5/8	6.4	1/4
TBTS05	Toggle Bar Threaded Swage 4mm	410	5/32	6.5	1/4	1/4	34.0	1 11/32	16.0	5/8	7.5	9/32	16.0	5/8	7.5	5/16
TBTS06	Toggle Bar Threaded Swage 5mm	510	3/16	6.5	1/4	1/4	34.0	1 11/32	16.0	5/8	7.5	9/32	16.0	5/8	9.0	3/8

Materials

All open body turnbuckles are made from high tensile 686 manganese bronze which eliminates the possibility of thread seizure, or galling. Fittings are threaded 316 stainless steel except for the threaded fixed jaws which are threaded bronze. Materials used are corrosive resistant to a salt water environment.

Closed body turnbuckles. Sizes 5/16, 7/16 & 3/4 are made from Grade 352.
All other sizes are made from Grade 464.

N.B In all cases our marine fittings are designed to exceed the breaking strengths of standard 1 x 19 stainless wire rope. If Compact strand wire is used special swaging procedures must be used. Please contact supplier for recommendations.

Table of Swage Dimensions

WIRE SIZE		OUTSIDE DIAMETER BEFORE SWAGING		OUTSIDE DIAMETER AFTER SWAGING	
<i>mm</i>	<i>inch</i>	<i>mm</i>	<i>inch</i>	<i>mm</i>	<i>inch</i>
1.6	1/16	4.06/3.94	.160/.155	3.50/3.40	.138/.133
2.5	3/32	5.53/5.41	.218/.213	4.82/4.7	.190/.185
3	1/8	6.35/6.22	.250/.245	5.56/5.44	.219/.214
4	5/32	7.54/7.42	.297/.292	6.35/6.23	.250/.245
5	3/16	9.12/9.00	.359/.354	7.95/7.83	.313/.308
5.5	7/32	10.84/10.72	.427/.422	9.50/9.35	.375/.368
6	1/4	12.54/12.42	.494/.489	11.12/10.95	.438/.431
7	9/32	14.30/14.18	.563/.558	12.70/12.50	.500/.492
8	5/16	16.13/16.01	.635/.630	14.30/14.07	.563/.554
9/10	3/8	17.85/17.73	.703/.698	15.90/15.70	.625/.618
11	7/16	19.83/19.63	.781/.773	17.47/17.27	.688/.680
12	1/2	21.44/21.32	.844/.839	19.05/18.82	.750/.741
12E	-	20.08/20.00	-	17.80/17.60	-
14	9/16	25.00/24.88	.984/.979	22.23/22.00	.875/.866
16	5/8	28.17/28.05	1.109/1.104	25.40/25.15	1.000/.990
19	3/4	34.52/34.40	1.359/1.354	31.75/31.44	1.250/1.238
22	7/8	40.46/40.21	1.593/1.583	36.50/36.20	1.437/1.425
25	1	46.02/45.77	1.812/1.802	41.28/40.97	1.625/1.613

List of products

Turnbuckle Fittings / Fittings / Assemblies

Closed Turnbuckle Toggle-None.....	pg 04
Closed Turnbuckle Eye Eye.....	pg 04
Closed Turnbuckle, Fixed Jaw - Fixed Jaw.....	pg 05
Closed Turnbuckle, Toggle-Toggle.....	pg 05
Closed Turnbuckle, Toggle-Stud.....	pg 06
Open Turnbuckle Eye - Eye.....	pg 07
Open Turnbuckle Toggle - None.....	pg 07
Open Turnbuckle Toggle - Toggle.....	pg 08
Open Turnbuckle, Fixed Jaw - Fixed Jaw.....	pg 08
Open Turnbuckle, Toggle-Stud.....	pg 09
Open Turnbuckle, Upset Toggle - None.....	pg 10

Turnbuckle Fittings / Fittings / Bodies

Closed Body Turnbuckle.....	pg11
Open Body Turnbuckle.....	pg11

Turnbuckle Fittings / Fittings / Fittings

Clevis Pins Standard.....	pg12
Clevis Pins for Forks.....	pg12
Clevis Pins for Fixed Toggles and Jaws.....	pg13
Clevis Pin for use with Double Jaw Toggles.....	pg13
Double Jaw Toggles.....	pg14
Fixed Jaws.....	pg14
Fixed Toggles.....	pg15
Lock Nuts.....	pg15
Swage Stud Standard Series.....	pg16
Swage Stud Long Series.....	pg17
T-Bolt.....	pg18
T-Bolt & Toggles.....	pg18
T-Toggles.....	pg19
Threaded Eyes.....	pg19

Swage Fittings

Clhain Wire Swages.....	pg 20
Clevis Pins.....	pg12
Fork Eyes.....	pg20
Fork Swages.....	pg21
Furling Eye Swages.....	pg21
Hook Swages.....	pg22
Marine Eyes.....	pg22
Sailmaker Eyes.....	pg23
T Swage.....	pg23
Swage Eye Toggles.....	pg24
Swage Stud.....	pg16

Backstay Insulators

Backstay Insulator Body.....	pg 25
Backstay Insulator Swage Stud.....	pg25
Backstay Insulator, Stud-Stud.....	pg26
Backstay Insulators, Toggle-Stud.....	pg26

Mast Fittings

Backing Plates.....	pg27
Stemball Eyes.....	pg27
Cup Washers.....	pg28
Stemball Swages.....	pg28
T/Bar Running Backstay.....	pg29
Threaded Stemballs.....	pg29
Threaded T Swage.....	pg30
T Swage.....	pg23

List of products

Lifeline Fittings

Clevis Pins.....	pg 12
Lifeline Closed Turnbuckle, Smoothline Fork-Stud.....	pg31
Lifeline Closed Turnbuckle, Toggle-Stud.....	pg31
Lifeline Open Turnbuckle, Toggle-Stud.....	pg32
Lifeline Swage Eye Toggles.....	pg32
Lifeline Swage Stud.....	pg32
Pelican Hooks.....	pg33
Smoothline Fork Swages.....	pg33
Threaded Smoothline Forks.....	pg33
Swivel Gate Eyes.....	pg34
Gate Eye Swivel D with Stud.....	pg34
Gate Eye Swivel D.....	pg34
Gate Eye Stud.....	pg34
Gate Eye Swivel Double D with Stud.....	pg34
Gate Eye Swivel Double D.....	pg34
Threaded Gate Eyes.....	pg35
Gate Eye Threaded D with Stud.....	pg35
Gate Eye Threaded D.....	pg35
Gate Eye Threaded Stud.....	pg35
Gate Eye Threaded Double D with Stud.....	pg35
Gate Eye Threaded Double D.....	pg35

Architectural Fittings

Allen Head Adjustor.....	pg 36
Allen Head Swage.....	pg36
Allen Head Swage-Stud.....	pg36
Architectural Closed Body.....	pg37
Architectural Swage Stud.....	pg37
Architectural T-bolt Toggle & Nut.....	pg37
Architectural Threaded Eye.....	pg38
Architectural Turnbuckle, Deck Toggle-Stud.....	pg38
Architectural Turnbuckle, Eye-Eye.....	pg38
Architectural Smoothline Fork-Stud.....	pg39
Architectural Turnbuckle Toggle-Stud.....	pg39
Deck Toggle & Threaded Swage.....	pg39
Toggle Threaded Swages.....	pg40

New Product

Hook Lever.....	pg 01
-----------------	-------



SafeRig

PO Box 7275, Warringah Mall NSW 2100
19 West Street, Brookvale NSW 2100

Ph: 0419 926 211

sales@saferig.com.au

saferig.com

V.11.25